

CONTRACT SUPPLEMENT
RFP-37 Rev. 11/22/16
Prev. Rev. 4/28/14

Daniel Melesko
Contract Specialist

860-713-5627
Telephone Number

STATE OF CONNECTICUT

DEPARTMENT OF ADMINISTRATIVE SERVICES
PROCUREMENT DIVISION
450 Columbus Boulevard, Hartford, CT 06103

CONTRACT AWARD NO.:	14PSX0073
Contract Award Date:	3 August 2014
Proposal Due Date:	11 July 2014
SUPPLEMENT DATE:	17 April 2018

CONTRACT AWARD SUPPLEMENT #6

IMPORTANT: THIS IS NOT A PURCHASE ORDER. DO NOT PRODUCE OR SHIP WITHOUT AN AGENCY PURCHASE ORDER.

DESCRIPTION: Two-Way Radio Communication Equipment, Services and Accessories

FOR: Department of Administrative Services		TERM OF CONTRACT: 3 August 2014 through 2 August 2018	
		AGENCY REQUISITION NUMBER:	
CHANGE TO IN STATE (NON-SB) CONTRACT VALUE	CHANGE TO DAS-CERTIFIED SMALL BUSINESS CONTRACT VALUE	CHANGE TO OUT OF STATE CONTRACT VALUE	CHANGE TO TOTAL CONTRACT AWARD VALUE

NOTICE TO CONTRACTORS: This notice is not an order to ship. Purchase Orders against contracts will be furnished by the using agency or agencies on whose behalf the contract is made. INVOICE SHALL BE RENDERED DIRECT TO THE ORDERING AGENCY.

NOTE: Dollar amounts listed next to each contractor are possible award amounts, however, they do not reflect any expected purchase amounts (actual or implied). They are for CHRO use only.

NOTICE TO AGENCIES: A complete explanatory report shall be furnished promptly to the Procurement Manager concerning items delivered and/or services rendered on orders placed against awards listed herein which are found not to comply with the specifications or which are otherwise unsatisfactory from the agency's viewpoint, as well as failure of the contractor to deliver within a reasonable period of time specified. Please issue orders and process invoices promptly.

CASH DISCOUNTS: Cash discounts, if any, shall be given SPECIAL ATTENTION, but such cash discount shall not be taken unless payment is made within the discount period.

PRICE BASIS: Unless otherwise noted, prices include delivery and transportation charges fully prepaid f.o.b. agency. No extra charge is to be made for packing or packages.

CONTRACTOR INFORMATION:

REFER TO THE CONTRACT ON THE DAS PROCUREMENT WEB PAGE FOR THE MOST CURRENT CONTRACTOR INFORMATION. (<http://das.ct.gov/mp1.aspx?page=8>)

Company Name: **Northeastern Communications, Inc.**

Company Address: **7 Great Hill Road, Naugatuck, CT 06770**

Tel. No.: **203-575-9008**

Fax No.: **203-753-1739**

Contract Value:

Contact Person: **Dawn Rizzo**

Delivery:

Contact Person Address: **7 Great Hill Road, Naugatuck, CT 06770**

Company E-mail Address and/or Company Web Site: **www.norcomct.com**

Remittance Address:

Certification Type (SBE, MBE or None):

Agrees to Supply Political SubDivisions:

Prompt Payment Terms: **0% 00 Net 45**

PLEASE NOTE:

Contract Award Supplement #6 updates the catalog for Northeastern Communication, Inc.

All terms and conditions not otherwise affected by this supplement remain unchanged and in full force and effect.

APPROVED _____

DANIEL MELESKO

Contract Specialist

(Original Signature on Document in Procurement Files)

XPR™ 3300e
VHF & UHF PORTABLES
6.25e/12.5 kHz

Suggested Retail

Standard Package Includes:

- Li-Ion IMPRES Li-Ion, 2100 mAh IP68 with Belt Clip (PMNN4491)
 - IMPRES™ Single-Unit Charger CEC Compliant (PMPN4174A)
 - UHF or VHF Antenna (must select appropriate option)
 - 2" Belt Clip (PMLN4651)
 - Accessory Dust Cover (0104058J40)
- STANDARD 2 YR WARRANTY + 1 YR SFS LITE

Main Radio Features:

Max. Number of Channels	16
Display	N/A
Keypad	N/A
Menu Navigation Buttons	N/A
Side Programmable Buttons	2
Front Programmable Buttons	N/A
Top Channel Knob Positions	16
Top Programmable (Orange) Button	N/A
Ingress Protection Rating	IP67

Enhanced Radio Features:

GPS	N/A
Intrinsically Safe Option	Optional
Expansion Card	N/A
Bluetooth Audio	Optional
Bluetooth Data	Optional
Third Party Applications	N/A
WiFi	Optional
Enhanced Privacy	Optional
Transmit Interrupt	Optional
Digital Telephony	Optional
Indoor Location	N/A
Text to Speech	N/A
Man Down	N/A

Systems Supported:

Analog Conventional	Yes
Digital Conventional	Yes
IP Site Connect	Optional
Capacity Plus	Optional
Linked Capacity Plus	Optional
Connect Plus	N/A
Capacity Max	N/A
LTR/PassPort	N/A

Notes:

1. For a full list of licensable features please refer to the "Premium Software Feature" section below

Frequencies not Allowed for XPR3300 (Self Quiet)					
VHF			UHF		
139.200	144.000	148.800	403.200	422.400	427.200
153.600	158.400	160.000	432.000	446.400	456.000
163.200	168.000	172.030	460.800	465.600	480.000
172.800			499.200	504.000	508.800
			519.250		



**XPR™ 3300e
VHF & UHF PORTABLES
MODELS AND OPTIONS**

RESELLER PRICES

BAND SPLIT	BAND	PWR	CHAN	MODEL	MODEL DESCRIPTION	MSRP
136-174 MHz	VHF	1W to 5W (shlps 5W)	16	AAH02JDC9VA1AN	XPR 3300e 136-174 5W NKP WIFI CAPABLE	\$601.67
403-512 MHz	UHF	1W to 4W (shlps 4W)	16	AAH02RDC9VA1AN	XPR 3300e 403-512 4W NKP WIFI CAPABLE	\$643.33

FCC INFORMATION VHF: AZ489FT7069, UHF: AZ489FT7068

Qualifies for Mix&Match (See Appendix for details)

Options: TO COMPLETE AN ORDER YOU MUST SELECT ONE (1) CHOICE FOR EACH STEP

STEP 1:

Battery Options:

STDBATO446	Standard Battery - IMPRES Li-Ion, 2100 mAh IP68 with Belt Clip (PMNN4491_)	N/C
QA02309	IMPRES LV Hi-Cap Li-Ion, 3000 mAh Battery IP68 with Belt Clip (PMNN4493_)	\$33.33
QA06045	IMPRES LV Hi-Cap Li-Ion, 3000 mAh Batt IP68 + Vibr. Belt Clip (PMNN4488_)	\$66.67
QA04950	IMPRES LV Li-Ion TIA4950, 2900mAh IP68 with Belt Clip (PMNN4490_)*	\$70.67

"The belt clip comes as part of the battery only when ordered as an option to the radio"

* The XPR 3300e, XPR 3500e, XPR 7350e, XPR 7550e, XPR7380e and XPR7580e portable radios MUST be ordered and shipped from Motorola with UL option QA04950 for the radios to be properly processed, certified and labeled as UL Approved in accordance with US and Canada Codes as Intrinsically Safe for use in Division 1, Division 2, Class 1, Group A, B, C, D, Class I Groups C, D, Class II Group E, F, G and Class III hazardous HAZ LDC certified by UL to standards ANSI/TIA 4950 and CAN/CSA C22.2 NO. 157-92.
Classification Rating Division 1, Class I, Groups C, D; Class II Group E, F, G; Class III. T3C.
Tamb = -25 °C to +60 °C, and Classification Rating Division 2, Class I, Groups A, B, C, D.
Intrinsically Safe when used with Motorola Battery PMNN4490A

STEP 2:

Charger Options:

STDCHG0446	Standard Charger - IMPRES Single Unit Charger CEC Compliant (PMPN4174A) With CEC Compliant Switch Mode Power Supply for customers in CA, OR, and WA	N/C
H951	Omit Standard Charger	-\$20.00

STEP 3:

Antenna Options - You MUST choose one:

VHF Antenna Options:

QA02299	VHF Helical Antenna 136-155 MHz (PMAD4117)	N/C
QA02308	VHF Helical Antenna 144-165 MHz (PMAD4116)	N/C
QA02310	VHF Helical Antenna 152-174 MHz (PMAD4118)	N/C
QA02307	VHF Stubby Antenna 136-148 MHz (PMAD4119)	N/C
QA02305	VHF Stubby Antenna 160-174 MHz (PMAD4121)	N/C
QA02306	VHF Stubby Antenna 146-160 MHz (PMAD4120)	N/C

UHF Antenna Options:

QA02304	UHF Slim Whip Antenna, 403-512 MHz (PMAE4079)	N/C
QA02303	UHF Stubby Antenna, 403-450 MHz (PMAE4069)	N/C
QA02302	UHF Stubby Antenna, 440-490 MHz (PMAE4070)	N/C
QA02301	UHF Stubby Antenna, 470-512 MHz (PMAE4071)	N/C
H112	Omit Antenna	-\$3.50

STEP 4:

Shipping Box Options:

STDBOX0446	Standard Model Box	N/C
H415	Bulk Packaging (minimum 10 units per line item)	N/C

The XPR Series portables ship with a standard 2-year parts and labor warranty. Additionally, they ship standard with a 1-year Service from the Start -LITE (SFS) option (formerly known as the Repair Service Advantage). Additional SFS options are also available in the General Options section.

STEP 5:

Service from the Start Options:

STDRSA0446	STANDARD 2 YR WARRANTY + 1 YR SFS LITE	N/C
QA00510	Omit 1-Year Service from the Start Lite (Omitting option provides 2-Years of coverage)	-\$18.33

**XPR™ 3300e
VHF & UHF PORTABLES
OPTIONS**

RESELLER PRICES

MODEL NUMBER	DESCRIPTION
--------------	-------------

General Options:

Accessories

QA02772	IMPRES Noise-Cancelling RSM w/3.5mm Audio Jack (PMMN4071)
QA02773	IMPRES Windporting RSM w/3.5mm Audio Jack (PMMN4073)
QA02774	2-Wire Surveillance Kit Black with Translucent Tube (PMLN7269)
QA02775	2-Wire Surveillance Kit Beige with Translucent Tube (PMLN5726)

H885	<p>ADD: 2-Year Service from the Start</p> <p>Provides for 2 years of extended hardware coverage beginning after the 2 year standard warranty and 1-year SFS that ships standard with the unit for a total coverage period of 5 years. Repairs will be made only at the designated Motorola repair depot. Local services are not included. Motorola will pay inbound shipping charges only with the use of the Motorola designated delivery service. Motorola will pay for outbound shipping via Motorola's normal shipping methods. No discounts are allowed on this option.</p>
------	---

HA00022	<p>3-Year Service from the Start with Comprehensive</p> <p>Provides 3 years of hardware repair coverage and chemical, liquid, and other physical damage on your Motorola portable and mobile subscriber radios. Comprehensive coverage starts from the date of shipment. Repairs will made only at the designated Motorola repair depot. Local services are not included. Motorola will pay the inbound shipping charges only with use of the Motorola designated delivery service. Motorola will pay for outbound shipping via Motorola's normal shipping methods. No discounts are allowed on this option.</p>
---------	---

Premium Software Features:

HKVN4084	MOTOTRBO Enhanced Privacy
HKVN4154	MOTOTRBO IP Site Connect
HKVN4271	MOTOTRBO Digital Telephone Interconnect
HKVN4412	Bluetooth 2.0 / 4.0 LE License
HKVN4249	Bluetooth Data & Discoverable Mode
HKVN4413	MOTOTRBO License Capacity Plus (Single Site)
HKVN4414	MOTOTRBO License Capacity Plus (Multi-Site)
HKVN4381	MOTOTRBO License Wi-Fi
HKVN4373	MOTOTRBO License Enhanced Noise Cancellation (SINC+)
HKVN4085	MOTOTRBO Transmit Interrupt
HKVN4493	MOTOTRBO Mute Mode
HKVN4492	MOTOTRBO Receive Audio Leveling

**APX™ 1000
VHF & UHF PORTABLES
12.5/20/25 kHz**

Suggested Retail

Standard Package Includes:

- IMPRES LIION 1900 mAh Battery (NNTN8128)
- ANTENNA VHF-NAR6593, UHF-PMAE4065
- 2" Standard Belt Clip (PMLN4651)
- Accessory Dust Cover
- 3 Year Service from the Start (with minimum 3 year Service from the Start Lite option)

NEW: Warranty is not included in the standard package and there is an extra charge for this.

- APX1000 Chargers must be purchased separately
- PMPN4174 IMPRES Single Unit Charger
- WPLN4212 IMPRES Multi Unit Charger with 1 Display
- WPLN4219 IMPRES Multi Unit Charger with Displays

Main Radio Features:	Model 1.5	Model 2
Max. Number of Channels	512	512
Display	Yes	Yes
Keypad	3 Soft Keys	Limited
Menu Navigation Buttons	Yes	Yes
Side Programmable Buttons	3	3
Front Programmable Buttons	3	3
Top Channel Knob Positions	Continuous	Continuous
Top Programmable (Orange) Button	Yes	Yes
Ingress Protection Rating	IP54	IP54

Enhanced Radio Features:	Model 1.5	Model 2
GPS	Yes	Yes
Intrinsically Safe Option	N/A	N/A
Accessory Port	GCAI	GCAI
Smart PTT	Yes	Yes
Selective Radio Inhibit	Yes	Yes

Operation Modes:	Model 1.5	Model 2
Analog and P25 Digital Conventional	Yes	Yes

Frequencies Not Allowed for APX™ 1000 VHF & UHF	
VHF	UHF
144.0000	384.0000
147.4500	385.0200
156.0000	393.2125
168.0000	407.8625
172.0250	417.7875
	431.9875
	442.3625

Within +/-25kHz of the specified frequency



**APX™ 1000
VHF & UHF PORTABLES
12.5/20/25 kHz**

RESELLER PRICES

BAND SPLIT	BAND	PWR	CHAN	MODEL	MODEL DESCRIPTION	MSRP
APX™ 1000 VHF & UHF Model 1.5 & 2						
136-174 MHz	VHF	1W to 5W	512	H84KDD9PW5_N	APX 1000 Model 1.5	\$1,391.00
136-174 MHz	VHF	1W to 5W	512	H84KDF9PW6_N	APX 1000 Model 2	\$1,597.00
380-470 MHz	UHF R1	1W to 5W	512	H84QDD9PW5_N	APX 1000 Model 1.5	\$1,391.00
380-470 MHz	UHF R1	1W to 5W	512	H84QDF9PW6_N	APX 1000 Model 2	\$1,597.00
450-520 MHz	UHF R2	1W to 5W	512	H84SDD9PW5_N	APX 1000 Model 1.5	\$1,391.00
450-520 MHz	UHF R2	1W to 5W	512	H84SDF9PW6_N	APX 1000 Model 2	\$1,597.00

FCC INFORMATION VHF: AZ489FT3834, UHF1: AZ489FT4917, UHF2: AZ489FT4920

Options: TO COMPLETE AN ORDER PLEASE REVIEW EACH STEP ONLY ONE (1) CHOICE PER EACH STEP

Required

Operation Mode - You MUST Choose One:

All models ship standard with Analog Operation

QA04097 ENH: P25 Digital Conventional \$350.00

RESELLER	DESCRIPTION
----------	-------------

Battery Choices:

All models ship standard with IMPRES LIION 1900 mAh Battery (NNTN8128)

QA02749 IMPRES Li-Ion Battery 2300mAh (PMNN4424) Non-FM & Non-UL

QA04146 IMPRES Li-Ion Battery 2700mAh IP67 (PMNN4484AR) Non-FM & Non-UL

H207 DELETE BATTERY (NNTN8128)

Antenna Choices:

All models ship with a standard antenna based upon model selection - VHF-NAR6593 & UHF-PMAE4065

QA02017 UHF2 GPS Stubby antenna (FAF5260)

H112 Delete Standar Antenna - Deletes the standar antenna (VHF-NAR6593 & UHF-PMAE4065)

Belt Clip (s) Choices:

All models ship standard with a 2" Belt Clip (PMLN4651)

Q698 ADD: 2.5" Belt Clip (PMLN7008)

H301 Delete Standard 2" Belt Clip (PMLN4651)

Programming & Data Cable:

Q157 APX Programming & Data Cable

PMKN4012 - Used to program the radio with Customer Programming Software and Tuner Software.

PMKN4013 - Used to program and service the radio with customer Programming Software and Tuner Software.

Manuals Choices:

All models ship standard with a user guide CD

QA00205 Add: Data Link manager APP CD-Portables

Option provides the NVN5424 Data CD. Please order this option if you would like the Data CD, and are unable to obtain it through other sources such as MOL.

H88 Add: User guide APX1000 CD-ROM

Service Option Choices - You MUST Choose One

H885BK 3 Year Service From the Start LITE

Provides 3 years of hardware coverage beginning on the date of shipment. Repairs will be made only at the designated Motorola repair depot. Local services are not included. Motorola will pay the inbound shipping charges only with use of the Motorola designated delivery service. Motorola will pay for outbound shipping via Motorola's normal shipping methods. No discounts are allowed on this option.

Q887AT 5 Year Service From the Start LITE

Provides 5 years of hardware coverage beginning on the date of shipment. Repairs will be made only at the designated Motorola repair depot. Local services are not included. Motorola will pay the inbound shipping charges only with use of the Motorola designated delivery service. Motorola will pay for outbound shipping via Motorola's normal shipping methods. No discounts are allowed on this option.

HA00022AB 3 Year Service From the Start Lite with COMPREHENSIVE

Provides for extended hardware repair coverage and chemical, liquid, and other physical damage on your Motorola portable and mobile subscriber radios. Comprehensive coverage starts from the date of shipment and lasts for 3 YEARS. Repairs will be made only at the designated Motorola repair depot. Local services are not included. Motorola will pay the inbound shipping charges only with use of the Motorola designated delivery service. Motorola will pay for outbound shipping via Motorola's normal shipping methods. No discounts are allowed on this option.

HA00025AG 5 Year Service From the Start Lite with COMPREHENSIVE

Provides for extended hardware repair coverage and chemical, liquid, and other physical damage on your Motorola portable and mobile subscriber radios. Comprehensive coverage starts from the date of shipment and lasts for 5 YEARS. Repairs will be made only at the designated Motorola repair depot. Local services are not included. Motorola will pay the inbound shipping charges only with use of the Motorola designated delivery service. Motorola will pay for outbound shipping via Motorola's normal shipping methods. No discounts are allowed on this option.

RFID Enabled Volume Knob

QA04526 ADD: RFID Volume Knob

Compatible with APX4000/APX2000/APX1000. Portable radio volume knob with embedded RFID tag making it easier to track assets. When option is ordered, RFID Volume knob will come in the box with the portable radio and other ordered accessories but RFID knob will not be assembled to the radio. Aftermarket purchase through parts department for fielded radios - Part Number NNTN8649.

See RFID Solution Partner link for information on partners that can provide customers with scanner hardware and back

CALL BOX/RTU RF KITS

Suggested Retail

GENERAL INFORMATION:

The following kits include MOTOTRBO Next Generation XPR 7550e (VHF/UHF) and XPR 7580e (800/900) Enabled portables intended for Call Box, Remote Terminal Units (RTU), such as Motorola ACE 1000, and other Supervisory Control and Data Acquisition (SCADA) applications. The portables provide an SubMiniature A (SMA) type antenna connector.

For radio integration into the Call Box/RTU please contact the specific call box/RTU manufacturer.

Operational on all MOTOTRBO systems. Antenna, battery, charger and belt clip are not included.

CALL BOX/RTU RF KITS

Model	Description	List
HK2079A	CALL BOX RF KIT "FKP PORT E VERSION" 5W 136-174 MHz	\$ 958.33
HK2080A	CALL BOX RF KIT "FKP PORT E VERSION" 4W 403-512 MHz	\$ 958.33
HK2081A	CALL BOX RF KIT "FKP PORT E VERSION" 2.5W 800/900 MHz	\$ 958.33

CM200d™ Mobile

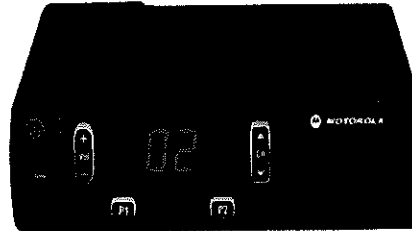
Suggested Retail

Standard Package Includes:

- Standard Microphone (PMMN4090)
- Standard Low Profile Mounting Bracket (RLN6469)
- Standard Power Cable (HKN4137)
- 2 Year Warranty + 1 Year Service from the Start - LITE

Product Features:

- 6.25e / 12.5 kHz Channel Spacing
- 16 Channels
- 2 Programmable Buttons
- LED Indicators
- Radio Management (Optional)



Analog Features:

- Auto/Priority/Dual Priority Scan
- Quik Call II™ Call Alert/Selective Call (Decode)
- MDC1200 PTT ID (Numeric ID - Encode)
- Audio Indicator Tones
- Time-Out Timer
- VOX
- Busy Channel Lockout

Frequencies Not Allowed:

- 153.600 MHz +/- 1 10 kHz
- 172.800 MHz +/- 1 10 kHz
- 422.400 MHz +/- 1 10 kHz

Digital Features:

- Digital Conventional
- Optional for Analog models
- Standard for Digital models
- Basic Privacy
- Radio Check (Decode)
- Remote Monitor (Decode)
- Radio Inhibit (Decode)
- Dual Priority Scan
- Transmit Interrupt (Decode)
- Dual Capacity Direct Mode

Programmable Features:

- Escalart
- Local/Distance Mode
- Repeater / Talkaround
- Silent Monitor
- Volume Set
- Voice Announcement

Analog Models

Model #	Band Split	Band	Power	Conv Chan	Display	MSRP
AAM01JNC9JC1_N	136-174 MHz	VHF	25W	16	N/A	\$501.67
AAM01JQC9JC1_N	136-174 MHz	VHF	45W	16	N/A	\$560.00
AAM01QNC9JC1_N	403-470 MHz	UHF	25W	16	N/A	\$551.67
AAM01QPC9JC1_N	403-470 MHz	UHF	40W	16	N/A	\$610.00

Digital Models

Model #	Band Split	Band	Power	Conv Chan	Display	MSRP
AAM01JNC9JA1_N	136-174 MHz	VHF	25W	16	N/A	\$585.00
AAM01JQC9JA1_N	136-174 MHz	VHF	45W	16	N/A	\$643.33
AAM01QNC9JA1_N	403-470 MHz	UHF	25W	16	N/A	\$635.00
AAM01QPC9JA1_N	403-470 MHz	UHF	40W	16	N/A	\$693.33

CM200d™ Mobile

Options: TO COMPLETE AN ORDER YOU MUST SELECT ONE (1) CHOICE FOR EACH OPTION

Microphone Options

Options	Description	MSRP
STDMIC0751	Standard Compact Microphone (PMMN4090)	\$0.00
QA03848	Enhanced Keypad Microphone (PMMN4089)	\$51.00
QA03850	Heavy Duty Microphone (PMMN4091)	\$31.00
B71	Omit Microphone	-\$10.00

Bracket Options

Options	Description	MSRP
STDBKT0751	Standard Mounting Bracket (RLN6469)	\$0.00
B65	Omit Standard Mounting Bracket	-\$4.00

Cable Options

Options	Description	MSRP
STDCBL0751	Standard Power Cable (HKN4137)	\$0.00
B161	Omit Standard Power Cable	-\$8.00

Shipping Options

Options	Description	MSRP
STDBOX0751	Standard Model Box	\$0.00
B842	Bulk Packaging (minimum 2 radios per box)	\$0.00

Warranty Options

Options	Description	MSRP
STDRSA0751	Standard 2-Year Warranty + 1Year SFS LITE	\$0.00
GA00164	Omit 1Year SFS LITE	-\$18.33

CM200d™ Mobile

General Options

Options	Description
HKVN4223	CM200d Analog to Digital Upgrade
G400	1 Year Service from the Start - LITE (US Only)
G24	2 Year Service from the Start - LITE (US Only)

Quantity Discount Program

You may "mix and match" any combination of SL300/CP185/CP200d portable models and/or

Service from the Start LITE

MOTOTRBO portable and mobiles radios ship with a standard 2-year parts and labor

FCC/IC Information:

VHF (25-45W): ABZ99FT3091 / 109AB-99FT3091
 UHF (1-25W): ABZ99FT4092 / 109AB-99FT4092
 UHF (25-40W) ABZ99FT4093 / 109AB-99FT4093

Environmental Specifications

Operating temperature: -30 to 70°C
 Sealing: IP54*

* With microphone sealing boot and rear accessory connector cover properly installed

CM300d™ Mobile

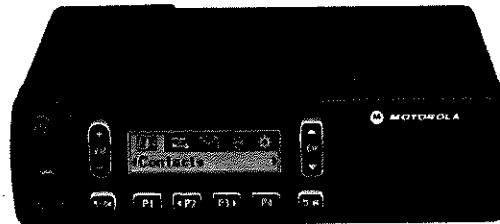
Suggested Retail

Standard Package Includes:

- Standard Microphone (PMMN4090)
- Standard Low Profile Mounting Bracket (RLN6469)
- Standard Power Cable (HKN4137)
- 2 Year Warranty + 1 Year Service from the Start - LITE

Product Features:

- 6.25e / 12.5 kHz Channel Spacing
- Alpha-Numeric Display
- White-lit Backlight
- 99 Channels
- 4 Programmable Buttons
- LED Indicators
- Radio Management (Optional)



Analog Features:

- Auto/Priority/Dual Priority Scan
- Quik Call II™ Call Alert/Selective Call (Decode)
- MDC1200 PTT ID (Numeric ID - Encode)
- Audio Indicator Tones
- Time-Out Timer
- VOX
- Busy Channel Lockout

Digital Features:

- Digital Conventional
- Optional for Analog models
- Standard for Digital models
- Basic Privacy
- Radio Check (Decode)
- Remote Monitor (Decode)
- Radio Inhibit (Decode)
- Dual Priority Scan
- Transmit Interrupt (Decode)
- Dual Capacity Direct Mode

Frequencies Not Allowed:

- 153.600 MHz +/- 1.0 kHz
- 172.800 MHz +/- 1.0 kHz
- 422.400 MHz

Programmable Features:

- Escalart
- Local/Distance Mode
- Repeater / Talkaround
- Silent Monitor
- Volume Set
- Voice Announcement

Analog Models

Model #	Band Split	Band	Power	Conv Chan	Display	MSRP
AAM01JNH9JC1_N	136-174 MHz	VHF	25W	99	Yes	\$560.00
AAM01JQH9JC1_N	136-174 MHz	VHF	45W	99	Yes	\$618.33
AAM01QNH9JC1_N	403-470 MHz	UHF	25W	99	Yes	\$610.00
AAM01QPH9JC1_N	403-470 MHz	UHF	40W	99	Yes	\$668.33

Digital Models

Model #	Band Split	Band	Power	Conv Chan	Display	MSRP
AAM01JNH9JA1_N	136-174 MHz	VHF	25W	99	Yes	\$643.33
AAM01JQH9JA1_N	136-174 MHz	VHF	45W	99	Yes	\$701.67
AAM01QNH9JA1_N	403-470 MHz	UHF	25W	99	Yes	\$693.33
AAM01QPH9JA1_N	403-470 MHz	UHF	40W	99	Yes	\$751.67

CM300d™ Mobile

Options: TO COMPLETE AN ORDER YOU MUST SELECT ONE (1) CHOICE FOR EACH OPTION

Microphone Options

Options	Description	MSRP
STDMIC0866	Standard Compact Microphone (PMMN4090)	\$0.00
QA03848	Enhanced Keypad Microphone (PMMN4089)	\$51.00
QA03850	Heavy Duty Microphone (PMMN4091)	\$31.00
B71	Omit Microphone	-\$10.00

Bracket Options

Options	Description	MSRP
STDBKT0866	Standard Mounting Bracket (RLN6469)	\$0.00
B65	Omit Standard Mounting Bracket	-\$4.00

Cable Options

Options	Description	MSRP
STDCBL0866	Standard Power Cable (HKN4137)	\$0.00
B161	Omit Standard Power Cable	-\$8.00

Shipping Options

Options	Description	MSRP
STDBOX0866	Standard Model Box	\$0.00
B842	Bulk Packaging (minimum 2 radios per box)	\$0.00

Warranty Options

Options	Description	MSRP
STDRSA0866	Standard 2 Year Warranty + 1Year SFSLITE	\$0.00
GA00164	Omit 1Year SFS LITE	-\$18.33

CM300d™ Mobile

General Options

Options	Description
HKVN4223	CM200d Analog to Digital Upgrade
G400	1 Year Service from the Start - LITE (US Only)
G24	2 Year Service from the Start - LITE (US Only)

Quantity Discount Program

You may "mix and match" any combination of SL300/CP185/CP200d portable models and/or

Service from the Start LITE

MOTOTRBO portable and mobiles radios ship with a standard 2-year parts and labor warranty.

FCC/IC Information:

VHF (1-25W): AZ492FT3805 / 109U-92FT3805

VHF (25-45W): ABZ99FT3046 / 109AB-99FT3046

UHF (1-25W): AZ492FT4856 / 109U-92FT4856

UHF (25-40W): ABZ99FT4048 / 109AB-99FT4048

Environmental Specifications

Operating Temperature: -30° to +60° C

Sealing: IP54

CP200d™ Portable

Suggested Retail

Standard Package Includes:

- Standard Battery (Li-ion, 2250 mAh, 7.5V - NNTN4497_R)
- Standard Charger CEC Complaint (90 Minute Rapid Rate - PMPN4173A)
- Standard Antenna (VHF Heliflex NAD6502_R / UHF Whip PMAE4016)
- 3" Belt Clip (HLN8255)
- 2 Year Warranty + 1 Year Service from the Start - LITE

Product Features:

- 6.25e / 12.5 kHz only Channel Spacing
- 2 Programmable Side Buttons
- LED Battery Indicator

Analog Features:

- Companding X-Pand™ Technology
- Time-Out-Timer
- Busy Channel Lockout
- Internal VOX
- Single Priority Scan
- Adjustable Power Levels
- MDC1200 PTT ID (Encode)
- Quik Call II Call Alert (Decode)
- Quik Call II Selective Call (Decode)

Digital Features:

- Optional for Analog models
- Standard for Digital models
- Basic Privacy
- Radio Check (Decode)
- Remote Monitor (Decode)
- Radio Inhibit (Decode)
- Dual Priority Scan
- Transmit Interrupt (Decode)

Programmable Features:

- High / Low Power
- Channel Scan
- LED Battery Indicator
- Squelch Levels
- Repeater / Talkaround
- Volume Set
- Tight / Normal Squelch
- VOX On / Off
- Nuisance Channel Delete
- Voice Announcement Scan (Digital Mode)



Pricing may be lower in MOL due to on going promotion until March 31, 2018.

Analog Models

Model #	Band Split	Band	Power	Conv Chan	Display	Keypad	MSRP
AAH01JDC9JC2AN	136-174 MHz	VHF	5W	16	No	No	\$485.00
AAH01QDC9JC2AN	403-470 MHz	UHF	4W	16	No	No	\$518.33

Digital Models

Model #	Band Split	Band	Power	Conv Chan	Display	Keypad	MSRP
AAH01JDC9JA2AN	136-174 MHz	VHF	5W	16	No	No	\$568.33
AAH01QDC9JA2AN	403-470 MHz	UHF	4W	16	No	No	\$601.67

CP200d™ Portable

Options: TO COMPLETE AN ORDER YOU MUST SELECT ONE (1) CHOICE FOR EACH OPTION

Battery Options

Options	Description	MSRP
STDBAT0752	Standard Battery - Li-Ion, 2250 mAh Battery (NNTN4497_R)	\$0.00
QA03815	Slim Li-Ion, 1600 mAh Battery (NNTN4970)	\$0.00
QA03816	NIMH, 1400 mAh Battery (NNTN4851)	\$0.00

Antenna Options

Options	Description	MSRP
STDANT0752	Standard Whip Antenna (UHF-PM4E4016, VHF-NAD6502_R)	\$0.00
QA00194	VHF Stubby Antenna, 146-162 MHz (HAD9742)	\$0.00
QA00189	VHF Stubby Antenna, 162-174 MHz (HAD9743)	\$0.00
QA03800	UHF Stubby Antenna, 403-433 MHz (PM4E4002)	\$0.00
QA00190	UHF Stubby Antenna, 430-480 MHz (PM4E4003)	\$0.00
H112	Omit Antenna	-\$3.50

Charger Options

Options	Description	MSRP
STDCHG0752	Standard Charger CEC Compliant - 90 Minute Rapid Rate w/ Switch Mode	\$0.00
H951	Omit Standard Charger	-\$15.00

Shipping Options

Options	Description	MSRP
STDBOX0752	Standard Model Box	\$0.00
H415	Bulk Packaging	\$0.00

Warranty Options

Options	Description	MSRP
STDRSA0752	Standard 2 Year Warranty + 1 Year SFS LITE (3 years of coverage)	\$0.00
QA00510	Omit 1 Year SFS LITE	-\$18.33

CP200d™ Portable

General Options

Options	Description
QA00531	Remote Speaker Microphone with Ear Jack, Coiled Cord and Swivel Clothing Clip
QA00532	Remote Speaker Microphone with IP57 Rating, Coiled Cord and Swivel Clothing Clip
QA04002	Lightweight Headset with Swivel Boom Microphone (PMLN6538)
HKVN4223	Analog to Digital Upgrade
Q884	1 Year Service from the Start - LITE (US Only)
H885	2 Year Service from the Start - LITE (US Only)

Quantity Discount Program

You may "mix and match" any combination of SL300/CP185/CP200d portable models and/or CM200d/CM300d

Service from the Start LITE

MOTOTRBO portable and mobile radios ship with a standard 2-year parts and labor warranty. Additionally, they ship

FCC/IC Information:

(136-174 MHz) ABZ99FT3092 / 109AB-99FT3092
(403-470 MHz) ABZ99FT4094 / 109AB-99FT4094

Environmental Specifications:

Operating Temperature: -30° to +60° C (Radio Only)
Sealing: IP54

**MTR2000 MOTOTRBO™ UPGRADE
VHF & UHF, 800/900 MHz
GENERAL INFORMATION**

Suggested Retail

The MTR3000 is a robust, high powered base station / repeater that offers reliability, future expandability, and the ease of migration from analog to digital technology. It integrates voice and data seamlessly, offers enhanced features that are easy to use and delivers increased capacity while the MTR3000 satellite receiver model helps enhance analog coverage. So no matter your needs, the MTR3000 provides a flexible communication solution from the field to the factory floor.

GENERAL INFORMATION:

High Powered Performance:

Minimal cabling and rack space
Digital Operation support for MOTOTRBO Conventional, IP Site Connect, Capacity Plus, Linked Capacity Plus, and Connect Plus
Analog Operation supports Conventional, LTR/Passport Trunking Systems

Serviceability:

Supports Remote or Local monitoring of system performance with Repeater Diagnostic Control Software (RDAC)
Modular based design allows for quick replacement of components with functionally separate Field Replaceable Units (FRU's) when needed.
Direct access to service ports via the front panel
Two Year standard warranty

Added Functionality:

Supports Dispatch capability via the MIP 5000 VoIP console
Digital Telephone Interconnect capability
Transmit Interrupt Suite
Analog Wireline capability enabling Integrated Tone Remote Control and DC Remote Control functionality with balanced audio. Must upgrade backplane
Voting Capability with the MOTOBIDGE VGU as well as the legacy Spectra-Tac and DIGITAC comparator. Must upgrade backplane

Added Functionality:

Supports Dynamic Mixed Mode to streamline automatic switching from analog to digital calls
Convert the MTR2000 to MTR3000 with minimal time and money investment with the MTR2000 Digital Upgrade Kit

RESOURCES:

Spec Sheet MOL Resource Center Print On Demand
Product Planner MOL Resource Center > Product Information> Systems > MOTOTRBO
MTR3000 Sales Guide (MOL Resource Center)

ORDERING REQUIREMENTS:

The MTR2000 Digital Upgrade Kit comes standard with the following
MTR3000 Exciter
MTR3000 Receiver
MTR3000 Station Control Module
MTR3000 Front Bezel
TORX Screws
MTR3000 FCC Upgrade Label
MTR2000 Digital Upgrade Kit Quick Reference Guide
MTR3000 Basic Service & Install Manual
Standard Two Year Warranty on the MTR3000 Exciter, Receiver and Control Board

DUE TO THE COMPLEX NATURE OF CERTAIN ORDERABLE OPTION CONFIGURATIONS WE STRONGLY RECOMMEND REVIEW OF THE PRODUCT PLANNER SALES ORDERING GUIDE BEFORE PLACING ORDERS.

The Main line item T2003A must be ordered.
The exact customer frequencies must be entered at the time of order. Frequency selection option also mandatory

US VERSION

**MTR2000 MOTOTRBO™ UPGRADE
VHF & UHF, 800/900 MHz**

SUGGESTED RETAIL

OPTIONS

MODEL	DESCRIPTION	MSRP
T2003	MTR2000 MOTOTRBO Upgrade	\$500.00

SELECT FREQUENCY OPTION:

X450MT	ADD: 800MHz 100W Power (806-870)	\$3,600.00
X460MT	ADD: 900MHz 100W Power (896-941)	\$3,600.00

*For UHF/VHF, supports both low power and high power MTR2000

Software:		
RVN5115	Portable, Mobile and Repeater Customer Programming Software (CPS) Package - DVD disk and MOL download. Software Package Includes CPS, Air Tracer, Tuner, RDAC, MNIS MCDD, DDMS and the MOTOTRBO System Planner. 3 Year Subscription. Note: Software requires a license agreement and is not intended for resale.	\$299.00
HKVN4362	Portable, Mobile and Repeater Customer Programming Software (CPS) Package - MOL download only version. Software Package Includes CPS, Air Tracer, Tuner, RDAC, MNIS MCDD, DDMS and the MOTOTRBO System planner. 3 year Subscription. Note: Software requires a license agreement and is not intended for resale.	\$169.00
DDN9957	HI-SPEED USB CABLE 6FT (TYPE A -B)	\$20.00

Premium System Software:
Use the part numbers below to purchase Premium Software feature Entitlement ID's (EID) for the MTR2000 upgraded repeaters. You will receive the EID via an e-mail. Use the MOTOTRBO RVN5115 CPS to register the serial number and activate the specific feature in the firmware of the desired unit. Internet connection is required during the registration, but the activation can be done offline.

Note: MOTOTRBO Premium Software Licenses are NOT transferrable from one device to another. Once a software feature has been registered and activated in a radio, it can NOT be transferred to another radio. If a radio unit is sent for repairs to a Motorola Solutions repair service depot, and the unit is readable with CPS, it will returned back with the same features enabled as it had originally. If the radio cannot be read with CPS it will be returned from the repair depot with only the factory default settings since the depot cannot verify the features originally enabled. In this case, a call to Technical Support at 800-927-2744 will be required to request a replacement license.

HKVN4044**	Dynamic Mixed Mode Software Upgrade	\$150.00
HKLN4439*	Capacity Plus Repeater License	\$1,667.00
HKVN4110*	Linked Capacity Plus New System Deployment	\$5,000.00
HKVN4112*	Linked Capacity Plus Upgrade from Capacity Plus	\$3,335.00
HKVN4055**	Enhanced GPS	\$750.00
HKVN4178*	Restricted Access to System Security	\$0.00

* These System level options must be used to enable the corresponding feature in All Repeaters in the Radio system; both voice and data revert.

** These software options are to be enabled only in the Repeaters that will support the specific feature (e.g. Enhanced GPS in the Data Revert Repeaters and Telephone Interconnect in the voice Repeater that is connected to the phone patch box).

Peripherals: Existing peripherals that are being utilized for the MTR2000 can retrofit the MTR3000 once it is upgraded. There is no need to purchase a new Duplexer, Preselector or Circulator or Antenna Relay.

Kit & Accessories: MTR3000 Field Replaceable Units (FRUs)

All Field Replacement Units (FRUs) are available through Customer Care and Service Division (RPSD) 1-800-927-2744.

FRU MTR3000:		
DLN6703	FRU UHF 403-470 MHz, EXCITER	\$1,500.00
DLN6705	FRU UHF 403-470 MHz, RECEIVER	\$1,500.00
DLN6707	FRU: MTR3000 AC/DC POWER SUPPLY	\$1,000.00
DLN6715	FRU 800/900 MHZ EXCITER	\$1,500.00
DLN6716	FRU 800/900 MHZ RECEIVER	\$1,500.00
DLN6712	FRU VHF 136-174 EXCITER	\$1,500.00
DLN6713	FRU VHF 136-174 RECEIVER	\$1,500.00
DLN6720	FRU: 4 WIRELINE BOARD	\$450.00
DLN6721	FRU: BACKPLANE	\$67.00

CONTROL/WIRELINE/MISCELLANEOUS FRU MTR3000s:		
DLN6719	FRU STATION CONTROL TCXO FOR VHF AND UHF	\$1,300.00
DLN6718	FRU STATION CONTROL OCXO FOR 800/900 MHz	\$1,600.00

US VERSION

**MTR2000 MOTOTRBO™ UPGRADE
VHF & UHF, 800/900 MHz**

SUGGESTED RETAIL ACCESSORIES

MODEL	DESCRIPTION	MSRP
-------	-------------	------

MICROPHONES/SPEAKERS/TEST CABLE:		
HSN1006	EXTERNAL SPEAKER	\$104.00
.0185180U01	CABLE FOR EXTERNAL SPEAKER	\$18.25
GMMN4063*	SERVICE MIC	\$72.00
*The Upgraded MTR2000 requires the use of the GMMN4063 service microphone		
30009493001	RECEIVER AUDIO TEST CABLE	\$65.25

CABINETS/RACKS & HARDWARE		
CLN6679	RACK MOUNT HARDWARE	\$50.00

SL300™ Portable

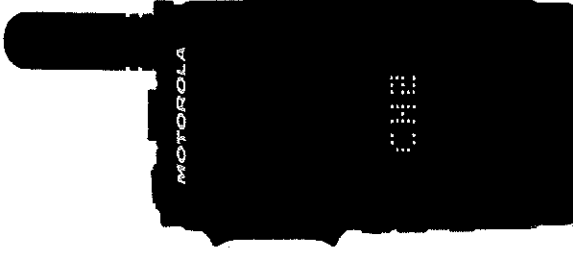
Suggested Retail

Standard Package Includes:

- Standard Battery (Li-ion, 2200 mAh - PMNN4468)
- Standard Micro-USB Wall Charger (25009298001)
- VHF Stubby / UHF Stubby Antenna (Must Select Option)
- Standard Carry Holster (PMLN7190)
- Battery Door Cover (PMLN7074)
- 2 Year Warranty + 1 Year Service from the Start - LITE

Product Features:

- Digital (3W) and Analog (2W) Mode
- 2 Zones (Display Model)
- Dual Capacity Direct Mode
- 6.25e / 12.5 kHz Channel Spacing
- 1 Programmable Side Button. Display Model Includes Menu List
- Basic Privacy
- Busy Channel Lockout
- Emergency
- LED Battery Indicator
- Lone Worker
- MDC1200
- Quik Call II
- Radio Check (Decode)
- Radio Inhibit (Decode)
- Remote Monitor (Decode)
- Scan - Priority / Dual Priority
- Time-Out-Timer
- Voice Announcement
- Uses MOTOTRBO CPS
- Radio Management Capable



Programmable Features:

- All Alert Tones On/Off
- Brightness (Display Model)
- Emergency On/Off
- High / Low Power
- Monitor
- Nuisance Channel Delete
- One Touch Button
- Permanent Monitor
- Privacy On, Off
- Repeater / Talkaround
- Scan On/Off
- Scrambling On/Off
- Site Lock On/Off
- Tight / Normal Squelch
- Voice Announcement On/Off
- Volume Set
- VOX On / Off
- Zone Toggle (Display Model)

Digital Models

Model #	Band Split	Band	Power	Conv Chan	Display	Keypad	MSRP
AAH88JCC9JA2_N	136-174 MHz	VHF	3W (D) 2W (A)	2	No	No	\$ 356.33
AAH88JCP9JA2_N	136-174 MHz	VHF	3W (D) 2W (A)	99	Yes	No	\$ 396.33
AAH88QCC9JA2_N	403-470 MHz	UHF	3W (D) 2W (A)	2	No	No	\$ 382.07
AAH88QCP9JA2_N	403-470 MHz	UHF	3W (D) 2W (A)	99	Yes	No	\$ 432.07

FCC INFORMATION VHF: AZ489FT3835, UHF: AZ489FT4922

SL300™ Portable

Options: TO COMPLETE AN ORDER YOU MUST SELECT ONE (1) CHOICE FOR EACH OPTION

Battery Options

Options	Description	MSRP
STDBAT0546	Standard Battery - Li-Ion, 2200 mAh (PMNIN468)	\$0.00

Antenna Options

Options	Description	MSRP
QA04760	VHF Stubby Antenna, 136-144MHz 5cm (PMAD4144)	\$0.00
QA04761	VHF Stubby Antenna, 144-156MHz 5cm (PMAD4145)	\$0.00
QA04762	VHF Stubby Antenna, 156-174MHz 5cm (PMAD4146)	\$0.00
QA04763	UHF Stubby Antenna, 403-425MHz 4.5cm (PMAE4093)	\$0.00
QA04764	UHF Stubby Antenna, 420-445MHz 4.5cm (PMAE4094)	\$0.00
QA04765	UHF Stubby Antenna, 435-470MHz 4.5cm (PMAE4095)	\$0.00
H112	Omit Antenna	-\$3.50

Carry Option:

Options	Description	MSRP
STDBLT0546	Standard Swivel Carry Holster (PMLN7190)	\$0.00
QA04882	ALT: Flexible Hand Strap (PMLN7076)	\$7.50
QA04883	ALT: Nylon Wrist Strap (PMLN6074)	\$5.00
H301	Omit Swivel Carry Holster	-\$3.50

Charger Options

Options	Description	MSRP
STDCHG0546	Standard Charger - Micro-USB Wall Charger (25009298001)	\$0.00
QA04770	ALT: Drop-In Single Unit Charger (PMLN7109)	\$25.00
H951	Omit Standard Charger	-\$5.00

Shipping Options

Options	Description	MSRP
STDBOX0546	Standard Model Box	\$0.00
H415	Bulk Packaging	\$0.00

Warranty Options

Options	Description	MSRP
STDRSA0546	Standard 2 Year Warranty + 1Year SFSLITE (3 years of coverage)	\$0.00
QA00510	Omit 1Year SFS LITE	-\$18.33

SL300 Portable

General Options

Options	Description
QA04755	Swivel Earpiece with Mic/PTT (PMLN7189)
QA04757	Earbud with Mic/PTT, Mag One (PMLN7156)
Q884	1 Year Service from the Start - LITE (US Only)
H885	2 Year Service from the Start - LITE (US Only)

Quantity Discount Program

You may "mix and match" any combination of SL300/CP185/CP200d portable models and/or CM200d/CM300d

Service from the Start LITE

MOTOTRBO portable and mobiles radios ship with a standard 2-year parts and labor warranty. Additionally, they ship

FCC/IC Information:

(136-174 MHz) AZ489FT3835 / 109U-89FT3835
(403-470 MHz) AZ489FT4922 / 109U-89FT4922

Environmental Specifications:

Operating Temperature: -30° to +60° C (Radio Only)
Sealing: IP54

SL 3500e Portable
UHF & VHF - 6.25e/12.5 kHz

Suggested Retail

Standard Package Includes:

- Standard Battery - Li-Ion, 2200 mAh (PMNN4468)
- Standard Charger - Micro-USB Wall Charger (25009298001)
- UHF or VHF Antenna (must select appropriate option)
- Standard Carry Holster (PMLN7190)
- Battery Door Cover (PMLN7074)
- Standard 2 Year Warranty + 1 Year SFS Lite

Main Radio Features:

Max. Number of Channels	128
Display	OLED
Keypad	Limited
Menu Navigation Buttons	N/A
Side Programmable Buttons	1
Front Programmable Buttons	2
Top Channel Knob Positions	Toggle (+ & -)
Top Programmable (Orange) Button	N/A
Ingress Protection Rating	IP54

Enhanced Radio Features:

GPS	N/A
Intrinsically Safe Option	N/A
Expansion Card	N/A
Bluetooth Audio	Optional
Bluetooth Data	Optional
Third Party Applications	N/A
WiFi	Optional
Enhanced Privacy	Optional
Transmit Interrupt	Optional
Digital Telephony	Optional
Indoor Location	N/A
Text to Speech	N/A
Man Down	N/A

Systems Supported:

Analog Conventional	Yes
Digital Conventional	Yes
IP Site Connect	Optional
Capacity Plus	Optional
Linked Capacity Plus	Optional
Connect Plus	N/A
Capacity Max	N/A
LTR/PassPort	N/A

Notes:

1. For a full list of licensable features please refer to the "Premium Software Feature" section below



**SL3500e Portable
UHF & VHF - 6.25e/12.5 kHz**

RESELLER PRICES

BAND SPLIT	BAND	PWR	CHAN	MODEL	MODEL DESCRIPTION	MSRP
136-174 MHz	VHF	3W (D) 2W (A)	128	AAH88JCD9SA2AN	SL 3500e 136-174 3W LKP BT WIFI CAPABLE	\$660.00
403-470 MHz	UHF	3W (D) 2W (A)	128	AAH88YCD9SA2AN	SL 3500e 403-470 3W LKP BT WIFI CAPABLE	\$702.00

2W 470-480 MHz

FCC INFORMATION VHF: AZ489FT7097 / UHF: AZ489FT096

Qualifies for Mix&Match (See Appendix for details)

Options: TO COMPLETE AN ORDER YOU MUST SELECT ONE (1) CHOICE FOR EACH STEP

	STEP 1:	
Battery Options:		
STDBAT0130 Standard Battery - Li-Ion, 2200 mAh (PMNN4468)		\$0.00
	STEP 2:	
Charger Options:		
STDCHG0130 Standard Charger - Micro-USB Wall Charger (25009298001)		\$0.00
QA04770 Drop-In Single Unit Charger (PMLN7109)		\$25.00
H951 Omit Standard Charger		-\$5.00
	STEP 3:	
Antenna Options - You MUST choose one:		
VHF Antenna Options:		
QA04760 VHF Stubby Antenna, 136-144MHz 5cm (PMAD4144)		\$0.00
QA04761 VHF Stubby Antenna, 144-156MHz 5cm (PMAD4145)		\$0.00
QA04762 VHF Stubby Antenna, 156-174MHz 5cm (PMAD4146)		\$0.00
UHF Antenna Options:		
QA04763 UHF Stubby Antenna, 403-425MHz 4.5cm (PMAE4093)		\$0.00
QA04764 UHF Stubby Antenna, 420-445MHz 4.5cm (PMAE4094)		\$0.00
QA04765 UHF Stubby Antenna, 435-470MHz 4.5cm (PMAE4095)		\$0.00
Other Antenna Options:		
H112 Omit Antenna		-\$3.50
	STEP 4:	
Shipping Box Options:		
STDBOX0130 Standard Model Box		\$0.00
H415 Bulk Packaging (minimum 10 units per line item)		\$0.00
Carrying Options:		
STDBLT0130 Standard Swivel Carry Holster (PMLN7190)		\$0.00
QA04882 ALT: Flexible Hand Strap (PMLN7076)		\$7.50
QA04883 ALT: Nylon Wrist Strap (PMLN6074)		\$5.00
H301 Omit Swivel Carry Holster		-\$3.50

The SL 3500e portables ship with a standard 2-year parts and labor warranty. Additionally, they ship standard with a 1-year Service from the Start - LITE (SfS) option (formerly known as the Repair Service Advantage). Additional SfS options are also available in the General Options section.

	STEP 5:	
Service from the Start Options:		
STDRSA0130 STANDARD 2 YR WARRANTY + 1 YR SFS LITE		N/C
QA00510 Omit 1-Year Service from the Start Lite (Omitting option provides 2-Years of coverage)		-\$18.33

General Options:

Accessories

QA04755AA	SWIVEL EARPIECE WITH MIC/PTT (PMLN7189A)
QA04756AA	D-STYLE EARPIECE WITH MIC/PTT (PMLN7159A)
QA04757AA	SWIVEL EARBUD EARPIECE WITH MIC/PTT (PMLN7156A)

H885 ADD: 2-Year Service from the Start
Provides for 2 years of extended hardware coverage beginning after the 2 year standard warranty and 1-year SFS that ships standard with the unit for a total coverage period of 5 years. Repairs will be made only at the designated Motorola repair depot. Local services are not included. Motorola will pay inbound shipping charges only with the use of the Motorola designated delivery service. Motorola will pay for outbound shipping via Motorola's normal shipping methods. No discounts are allowed on this option.

HA00022 3-Year Service from the Start with Comprehensive
Provides 3 years of hardware repair coverage and chemical, liquid, and other physical damage on your Motorola portable and mobile subscriber radios. Comprehensive coverage starts from the date of shipment. Repairs will be made only at the designated Motorola repair depot. Local services are not included. Motorola will pay the inbound shipping charges only with use of the Motorola

Premium Software Features:

HKVN4084	MOTOTRBO Enhanced Privacy
HKVN4154	MOTOTRBO IP Site Connect
HKVN4271	MOTOTRBO Digital Telephone Interconnect
HKVN4412	BLUETOOTH 2.0 / 4.0 LE License
HKVN4249	Bluetooth Data & Discoverable Mode
HKVN4413	MOTOTRBO License Capacity Plus (Single Site)
HKVN4414	MOTOTRBO License Capacity Plus (Multi-Site)
HKVN4381	MOTOTRBO License Wi-Fi
HKVN4373	MOTOTRBO License Enhanced Noise Cancellation (SINC+)
HKVN4085	MOTOTRBO Transmit Interrupt
HKVN4493	MOTOTRBO Mute Mode
HKVN4492	MOTOTRBO Receive Audio Leveling

SL 7550e / SL 7580e / SL 7590e
UHF1, UHF2, 800 MHz, 900 MHz PORTABLES
6.25e/12.5 kHz



Suggested Retail

Standard Package Includes:

- BT100x 2300T mAh Li-Ion Battery (PMNN4468)
 - Micro USB Charger, Non-Vehicular (PMPN4009)
 - Pre-Installed UHF 438-470MHz (PMAE4077), UHF2 450-490MHz (PMAE4091), 800 MHz (PMAF4017), or
 - Carry Holder (PMLN5956)
 - Quick Reference Guide/Safety Booklet (68009553001)
- STANDARD 2 YR WARRANTY + 1 YR SFS LITE

Main Radio Features:

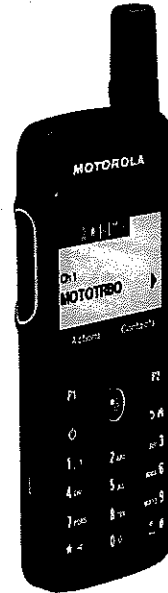
Max. Number of Channels	1000
Display - 5 Line Color Alphanumeric	Yes
Keypad	Yes
Menu Navigation Buttons	Yes
Side Programmable Buttons	N/A
Front Programmable Buttons	2
Top Channel Knob Positions	N/A
Side Programmable (Orange) Button	Yes
Ingress Protection Rating	IP54

Enhanced Radio Features:

GPS	N/A
Intrinsically Safe Option	N/A
Expansion Card	Yes
Bluetooth Audio	Yes
Bluetooth Data	Yes
Third Party Applications	Yes
WiFi	Yes
Enhanced Privacy	Yes
Transmit Interrupt	Yes
Digital Telephony	Yes
Indoor Location	Optional
Text to Speech	Optional
Man Down (non-Connect Plus Only)	Optional

Systems Supported:

Analog Conventional	N/A
Digital Conventional	Yes
IP Site Connect	Yes
Capacity Plus	Yes
Linked Capacity Plus	Yes
Connect Plus	Yes
Capacity MAX	Yes
LTR/PassPort	N/A



Notes:

1. For a list of licensable features please refer to the Premium License section

Self-Quiescent Frequencies				
UHF1	UHF2	800 MHz	900 MHz	
400.200 MHz ± 5 kHz	459.200 MHz ± 5 kHz	451.200 MHz ± 5 kHz	487.200 MHz ± 5 kHz	852.000 MHz ± 5 kHz
405.600 MHz ± 5 kHz	440.000 MHz ± 5 kHz	453.600 MHz ± 5 kHz	489.600 MHz ± 5 kHz	853.335 MHz ± 5 kHz
408.000 MHz ± 5 kHz	441.000 MHz ± 5 kHz	455.000 MHz ± 5 kHz	492.000 MHz ± 5 kHz	854.320 MHz ± 5 kHz
410.400 MHz ± 5 kHz	444.000 MHz ± 5 kHz	456.000 MHz ± 5 kHz	494.400 MHz ± 5 kHz	854.400 MHz ± 5 kHz
412.800 MHz ± 5 kHz	446.400 MHz ± 5 kHz	459.800 MHz ± 5 kHz	499.200 MHz ± 5 kHz	854.480 MHz ± 5 kHz
415.200 MHz ± 5 kHz	448.800 MHz ± 5 kHz	460.800 MHz ± 5 kHz	501.600 MHz ± 5 kHz	855.800 MHz ± 5 kHz
417.600 MHz ± 5 kHz	451.200 MHz ± 5 kHz	465.600 MHz ± 5 kHz	504.000 MHz ± 5 kHz	859.200 MHz ± 5 kHz
420.000 MHz ± 5 kHz	456.000 MHz ± 5 kHz	467.840 MHz ± 5 kHz	506.400 MHz ± 5 kHz	862.000 MHz ± 5 kHz
422.400 MHz ± 5 kHz	460.800 MHz ± 5 kHz	468.040 MHz ± 5 kHz	508.800 MHz ± 5 kHz	863.960 MHz ± 5 kHz
424.800 MHz ± 5 kHz	465.600 MHz ± 5 kHz	468.160 MHz ± 5 kHz	511.200 MHz ± 5 kHz	864.060 MHz ± 5 kHz
427.200 MHz ± 5 kHz	467.960 MHz ± 5 kHz	470.400 MHz ± 5 kHz	513.600 MHz ± 5 kHz	864.400 MHz ± 5 kHz
429.600 MHz ± 5 kHz	468.040 MHz ± 5 kHz	472.800 MHz ± 5 kHz	517.400 MHz ± 5 kHz	868.800 MHz ± 5 kHz
431.960 MHz ± 40 kHz		473.200 MHz ± 5 kHz	518.400 MHz ± 5 kHz	
432.040 MHz ± 40 kHz		477.600 MHz ± 5 kHz	520.000 MHz ± 5 kHz	
434.400 MHz ± 5 kHz		480.000 MHz ± 5 kHz	523.200 MHz ± 5 kHz	
436.800 MHz ± 5 kHz		484.800 MHz ± 5 kHz		

SL 7550e / SL 7580e / SL 7590e
UHF1, UHF2, 800 MHz, 900 MHz PORTABLES
6.25e/12.5 kHz

RESELLER PRICES

BAND SPLIT	BAND	PWR	CHAN	MODEL	MODEL DESCRIPTION	MSRP
403-470 MHz	UHF1	3W	1000	AAH81QCN9TA2AN	SL7550e 403-470M 3W ENG FKP WIFI GOB ENABLED	\$1,329.39
450-512 MHz	UHF2	3W	1000	AAH81TCN9TA2AN	SL7550e 450-512M 3W ENG FKP WIFI GOB ENABLED	\$1,329.39
806-870 MHz	800	2W	1000	AAH81VCN9TB2AN	SL7580e 806-870M 2W ENG FKP WIFI GOB ENABLED	\$1,329.39
896-941 MHz	900	2W	1000	AAH81WCN9TB2AN	SL7590e 896-941M 2W ENG FKP WIFI GOB ENABLED	\$1,329.39

FCC INFORMATION UHF1: AZ489FT7072, UHF2: AZ489FT7073, 800: AZ489FT7074, 900: AZ489FT7075

Qualifies for Mix&Match (See Appendix for details)

Options: TO COMPLETE AN ORDER YOU MUST CHOOSE ONE (1) OPTION FROM EACH STEP BELOW

STEP 1:

UHF Battery Choices:

STDBAT0682	Standard Battery - BT100x 2300T mAh Li-Ion Battery (PMNN4468) and Cover	N/C
QA04403	ALT: BT90 1800 mAh Li-Ion Hi-Cap Battery (HKNN4013) and Cover	N/C

800 MHz & 900 MHz Battery Choices:

STDBAT0806	Standard Battery - BT100x 2300T mAh Li-Ion Battery (PMNN4468) and Cover	N/C
QA04403	ALT: BT90 1800 mAh Li-Ion Hi-Cap Battery (HKNN4013) and Cover	N/C

STEP 2:

UHF Charger Choices:

STDCHG0682	Standard Charger - Micro USB Charger, Non-Vehicular (PMPN4009)	N/C
H951	Omit Standard Charger	-\$8.00
QA02813	ADD: SL Series Tri-Unit Charger (PMLN6701)	\$71.00

800 MHz & 900 MHz Charger Choices:

STDCHG0806	Standard Charger - Micro USB Charger, Non-Vehicular (PMPN4009)	N/C
H951	Omit Standard Charger	-\$8.00
QA02813	ADD: SL Series Tri-Unit Charger (PMLN6701)	\$71.00

STEP 3:

UHF Carry Holder Choices:

STDBLT0682	Standard Carry Holder - Carry Holder (PMLN5956)	N/C
H301	Omit Standard Carry Holder	-\$5.00

800 MHz & 900 MHz Carry Holder Choices:

STDBLT0806	Standard Carry Holder - Carry Holder (PMLN5956)	N/C
H301	Omit Standard Carry Holder	-\$5.00

STEP 4:

UHF Shipping Box Choices:

STDBOX0682	Standard Model Box	N/C
H415	Bulk Packaging (Minimum 10 units per line item)	N/C

800 MHz & 900 MHz Shipping Box Choices:

STDBOX0806	Standard Model Box	N/C
H415	Bulk Packaging (Minimum 10 units per line item)	N/C

STEP 5:

The XPR Series portables ship with a standard 2-year parts and labor warranty. Additionally, they ship standard with a 1-year Service from the Start -LITE (SFS) option (formerly known as the Repair Service Advantage). Additional SFS options are also available in the General Options section.

UHF Service from the Start-LITE Options:

STDWAR0682	STANDARD 2 YR WARRANTY + 1 YR SFS LITE	N/C
QA00510	Omit 1-Year Service from the Start Lite (Omitting option provides 2-Years of coverage)	-\$26.67

800 MHz & 900 MHz Service from the Start-LITE Options:

STDWAR0806	STANDARD 2 YR WARRANTY + 1 YR SFS LITE	N/C
QA00510	Omit 1-Year Service from the Start Lite (Omitting option provides 2-Years of coverage)	-\$26.67

SL 7550e / SL 7580e / SL 7590e
UHF1, UHF2, 800 MHz, 900 MHz PORTABLES
6.25e/12.5 kHz

RESELLER PRICES**MOTOTRBO Connect Plus Trunking Operation:**

MOTOTRBO Connect Plus is the next generation professional digital trunking communications solution that provides enhanced performance, productivity and value for two way radio users. Please refer to the XRC 9000 Controller section (under Fixed Equipment) for more information on how to order Connect Plus trunking systems.

QA02005	Connect Plus Trunking Operation Includes factory loading of the Connect Plus firmware application. Notes: 1. Option QA02005 requires MOTORBO CPS version 13.0 or higher. 2. Option QA02005 requires MOTORBO Option Board CPS (available in MOL Resource Center at no cost). 3. Please refer to the Fixed Equipment section for Connect Plus Trunking system information. 4. Please refer to the Connect Plus System Planner and your Motorola COEE team representative
---------	--

General Options:**UHF1 Antennas**

A micro-precision screwdriver TORX™ T4 (not included) is required to assemble the antenna kit.

QA02744	ADD: Stubby Antenna Kit 403-425MHz (PMAE4078)
QA02755	ADD: Stubby Antenna Kit 420-445MHz (PMAE4076)

UHF2 Antennas

QA02302	ADD: Stubby Antenna Kit 480-527MHz (PMAE4092A)
---------	--

Accessories

QA02814	ADD: Bluetooth Earpiece Pod w/Fast PTT, 12" Cable (NNTN8125)
QA02815	ADD: Swivel Earpiece w/In-Line Microphone and PTT (PMLN7189)
QA02816	ADD: Surveillance Earpiece w/In-Line Microphone and PTT (PMLN7158)

Service from the Start - LITE

H885	ADD: 2-Year Service from the Start Provides for 2 years of extended hardware coverage beginning after the 2 year standard warranty and 1-year SFS that ships standard with the unit for a total coverage period of 5 years. Repairs will be made only at the designated Motorola repair depot. Local services are not included. Motorola will pay inbound shipping charges only with the use of the Motorola designated delivery service. Motorola will pay for outbound shipping via Motorola's normal shipping methods. No discounts are allowed on this option.
HA00022	3-Year Service from the Start with Comprehensive Provides 3 years of hardware repair coverage and chemical, liquid, and other physical damage on your Motorola portable and mobile subscriber radios. Comprehensive coverage starts from the date of shipment. Repairs will be made only at the designated Motorola repair depot. Local services are not included. Motorola will pay the inbound shipping charges only with use of the Motorola designated delivery service. Motorola will pay for outbound shipping via Motorola's normal shipping methods. No discounts are allowed on this

Premium Software Features:

HKVN4432	MOTOTRBO License Indoor Location
HKVN4281	MOTOTRBO Text to Speech
HKVN4373	MOTOTRBO License Enhanced Noise Cancellation (SINC+)
HKVN4179	MOTOTRBO Built In Man Down (non-Connect Plus Only)
HKVN4493	MOTOTRBO Mute Mode
HKVN4492	MOTOTRBO Receive Audio Leveling
HKVN4384	Authenticated Radio Disable (Required for Target Radio Only)
HKVN4385	Transmit Inhibit

SLR1000 REPEATERS
12.5 kHz

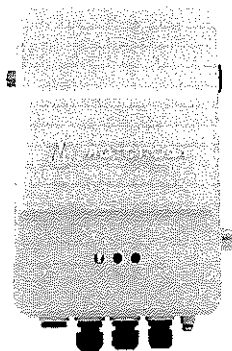
Available to Order: 8/30
Shipments Begin: Now shipping!!

Suggested Retail

- Each SLR 1000 Includes:
- 12V DC Power Cord (Requires 12V power source)
 - Wall Mount Bracket
 - 2 Year Warranty
 - Quick Start Guide

Features:

- 1-10W transmit power
- IP65 Rated, UL Outdoor Part 22 (60950-22)
- Supports Two Simultaneous Voice Paths in Digital TDMA Mode
- Operates in Analog or Digital Mode
- Supports all MOTOTRBO system architectures
- Remote Diagnostics Alarms and Controls (RDAC)
- 100% Continuous Duty Cycle
- Pole Mount Kit Sold Separately
- AC Power Supply Sold Separately



Frequencies Not Allowed for SLR 1000:
When using an External Repeater Mounted Antenna, the following frequencies are not allowed for the SLR 1000:
400, 401.3, 412.4, 425, 441.6, 450, 460.8, 475, 480, 499.2, 500

*Please also see the list of available Premium Software feature options below which must be purchased in addition to the repeater.

REQUIRED

CATALOG MODEL	DESCRIPTION	BAND	MSRP
AAR11SDGANQ1AN	SLR 1000 400-512M 10W	UHF	\$3,700.00

FCC INFORMATION: UHF: ABZ99FT4100

OPTIONAL

OPTIONAL CONFIGURATIO	DESCRIPTION	MSRP
Untuned Internal Duplexers (for use with 10 Watt SLR 1000 only) - Requires Install & Tuning in the Field		
GA01589AA	ADD: UHF DUPLEXER (ROHS) 410-430MHZ (5MHz separation RX or TX)	\$900.00
GA01590AA	ADD: UHF DUPLEXER (ROHS) 430-480MHZ (5MHz separation RX or TX)	\$900.00
GA01591AA	ADD: UHF DUPLEXER (ROHS) 480-527MZ (5MHz separation RX or TX)	\$900.00

Internal Antenna Switch (for use with 10 Watt SLR 1000 only) - Requires Install & Configuration in the Field

GA01592AA	ADD: ANTENNA SWITCH (FOR EXTENDED RANGE DIRECT MODE)	\$300.00
-----------	--	----------

Please note - NOT compatible with above duplexers. This mode of operation requires a software license

External Repeater Mounted Antenna

GA01593AA	ADD: EXTERNAL MOUNTED ANTENNA (400-460MHZ)	\$133.00
GA01594AA	ADD: EXTERNAL MOUNTED ANTENNA (440-495MHZ)	\$133.00
GA01595AA	ADD: EXTERNAL MOUNTED ANTENNA (490-512MHZ)	\$133.00

Note: For use with duplexer or antenna switch. If the duplexer or antenna switch accessories are not used, external antennas are required

Note: See above table for self-quieting frequencies

Note: Not recommended for areas that are susceptible to lightning

Power Accessories:

GA01596AA	ADD: AC POWER ADAPTOR KIT FOR INDOOR USE (INCLUDES BRACKET)	\$200.00
GA01597AA	ADD: AC POWER ADAPTOR KIT FOR OUTDOOR USE (HARD WIRE)	\$400.00

Mounting Accessories:

GA01598AA	ADD: POLE MOUNTING KIT	\$150.00
-----------	------------------------	----------

Note: Fits poles 2-2.75"

SLR 1000 REPEATER ACCESSORIES

MODEL NUMBER	DESCRIPTION	MSRP
Duplexers:		
HKFE4000A	UHF Duplexer (RoHS) 410-430MHz (5MHz separation RX or TX)	\$900.00
HKFE4001A	UHF Duplexer (RoHS) 430-480MHz (5MHz separation RX or TX)	\$900.00
HKFE4002A	UHF Duplexer (RoHS) 480-527MHz (5MHz separation RX or TX)	\$900.00
Antennas and Switch:		
HKA4003A	SLR 1000 External Repeater Mounted Antenna (400-460MHz)	\$133.00
HKA4004A	SLR 1000 External Repeater Mounted Antenna (440-495MHz)	\$133.00
HKA4005A	SLR 1000 External Repeater Mounted Antenna (490-530MHz)	\$133.00
PMLN7263A	SLR 1000 Antenna Switch for Extended Range Direct Mode Operation	\$300.00
Power Accessories:		
PMLN7773A	SLR 1000 AC POWER ADAPTOR FOR INDOOR APPLICATION (INCLUDES BRACKET, REQUIRES AC LINE CORD)	\$200.00
3087791G01	POWER CORD, US PLUG	\$20.00
PMLN7771A	SLR 1000 AC POWER ADAPTOR FOR OUTDOOR APPLICATION (HARD WIRE)	\$400.00
Mounting Accessories:		
PMLN7213A	SLR 1000 Pole Mount Adaptor Kit (Fits poles 2-2.75")	\$150.00
Premium System Software: SAME SOFTWARE LICENSES AS SLR 5700		
HKLN4427	Capacity Plus Single Site Digital Trunking	\$1,667.00
HKVN4089	Linked Capacity Plus Upgrade from Capacity Plus -	\$3,335.00
HKVN4099	Linked Capacity Plus New System Deployment -	\$5,000.00
HKVN4324	Capacity Max Repeater License	\$6,000.00
HKVN4242	Digital Voting Operation	\$1,250.00
HKLN4442	RDAC Multiple System Monitoring Upgrade License	\$250.00
HKLN4456	Dynamic Mixed Mode Upgrade License (Analog & Digital Automatic Call Switching)	\$250.00
HKVN4048**	Enhanced Scheduled GPS License	\$750.00
HKVN4177*	Restricted Access to System Security	\$0.00
HKVN4047	IP Repeater Programming and Upgrade License	\$250.00
* Activate in the MOTOTRBO CPS 6.0 or later. Once activated, the CPS can connect to an unlimited number of repeaters, one at a time.		
HKVN4049**	Digital Telephone Interconnect Upgrade	\$583.35
HKVN4205*	Data Network Application Interface (IP Wireline Data Gateway)	\$750.00
HKVN4206*	Voice Network Application Interface (IP Wireline Voice Gateway) for use with AVTEC SCOUT and WAVE	\$250.00
HKVN4488	Extended Range Direct Mode Operation	\$400.00
* These System level options must be used to enable the corresponding feature in All Repeaters in the Radio system: both voice and data revert.		
** These software options are to be enabled only in the Repeaters that will support the specific feature (e.g. Enhanced GPS in the Data Revert Repeaters and Telephone Interconnect in the voice Repeater that is connected to the phone patch box and Digital Voting Only in the Voting Repeater).		
Service, Programming Accessories and Cables: (SAME CPS/PROGRAMMING CABLE AS SLR 5700 - NEW TEST CABLE ADAPTER)		
RVNS115AN	Portable, Mobile and Repeater Customer Programming Software (CPS) Package: Software Package Includes Radio Management, CPS, Air Tracer, Tuner and the MOTOTRBO System Planner. 3 Year Subscription Package Software is compatible with Windows XP & Windows Vista (Home and Professional Versions); support for Windows 2000 ended 6/30/09. Portables require PMKN4012 or PMKN4013 Programming Cable - Mobiles and Repeaters require HKN6184, PMKN4010 or PMKN4016 Programming Cables. Note: Software requires a license agreement and is not intended for resale.	\$299.00
CB000174A02	SLR 1000 STATION ACCY TEST CABLE ADAPTER	CALL
PMKN4166	Test Cable (for test box and external speaker. Requires CB000174A02 adapter for SLR 1000)	CALL
30009477001	Repeater Programming Cable (USB A TO USB B)	CALL
PMLN7265AS	SLR 1000 Miscellaneous Hardware Kit (Spare plugs and seals)	CALL
General Accessories:		
MN003557A01	MOTOTRBO SLR 1000 Repeater Basic Service and Installation Manual (PDF ONLY) - NAG	N/C
MN003581A01	MOTOTRBO SLR 1000 Series Quick Start Guide (PDF ONLY) - NAG	N/C

**SLR 5700
REPEATERS
12.5 kHz**



Suggested Retail

- Each SLR 5700 Includes:
- 120V AC Power Cord
- 2 Year Warranty
- Quick Start Guide

Features:

- 1-50W transmit power
- Integrated 3A battery charger
- Supports Two Simultaneous Voice Paths in Digital TDMA Mode
- Operates in Analog or Digital Mode
- Supports all MOTOTRBO system architectures
- Remote Diagnostics Alarms and Controls (RDAC)
- 100% Continuous Duty Cycle
- Internal Power Supply
- Rack Mountable
- Wall-mount Kits Sold Separately
- Automated Battery Back-up (Battery sold separately)
- IP Site Connect (Digital Mode Only)

Frequencies Not Allowed for SLR 5700:

N/A - there are no self quieting frequencies on the SLR5700 models

Frequencies Not Allowed for SLR 5700:

N/A - there are no self quieting frequencies on the SLR5700 models

*Please also see the list of available Premium Software feature options below which must be purchased in addition to the repeater.

BAND SPLIT	BAND	PWR	CHAN	CATALOG MODEL	MSRP
136-174 MHz	VHF	1-50W	1	AAR10ICGANCLIAN	\$3,100
403-470 MHz	UHF	1-50W	1	AAR10CCGANCLIAN	\$3,200
450-512 MHz	UHF2	1-50W	1	AAR10TCGANCLIAN	\$3,200

FCC INFORMATION: VHF: ABZ99FT4096, VHF: ABZ99FT3094, UHF2: ABZ99FT4097

For technical training on Motorola products, please visit:

<https://learning.motorolasolutions.com/>

**SLR 5700
REPEATER
ACCESSORIES**

Suggested Retail

MODEL NUMBER	DESCRIPTION	MSRP
--------------	-------------	------

Premium System Software:

Use the part numbers below to purchase Premium Software feature Entitlement ID's (EID) for the SLR 5700 repeaters. You will receive the EID via an e-mail. Use the MOTOTRBO RVN5115 CPS to register the serial number and activate the specific feature in the firmware of the desired unit. Internet connection is required during the registration, but the activation can be done offline.

Notes: MOTOTRBO Premium Software Licenses are NOT transferrable from one device to another. Once a software feature has been registered and activated in a radio/repeater, it can NOT be transferred to another radio/repeater. The SLR 5700 repeaters contain an integrated Chassis ID module which retains the MOTOTRBO Premium Software features that were enabled on the unit. Servicing and replacing service FRU's will not require replacement licenses. Any extraordinary considerations for a replacement license on these models would require a call to Technical Support at 800-927-2744. Premium system software part numbers for the SLR 5700 are the same as the XPR8400 series.

HKLN4427*	Capacity Plus Single Site Digital Trunking	\$1,667.00
HKVN4089*	Linked Capacity Plus Upgrade from Capacity Plus -	\$3,835.00
HKVN4099*	Linked Capacity Plus New System Deployment -	\$5,000.00
HKVN4324*	Capacity Max Repeater License	\$6,000.00
HKVN4242**	Digital Voting Operation	\$1,250.00
HKLN4442	RDAC Multiple System Monitoring Upgrade License	\$250.00

HKLN4456	Dynamic Mixed Mode Upgrade License (Analog & Digital Automatic Call Switching)	\$250.00
HKVN4048**	Enhanced Scheduled GPS License	\$750.00
HKVN4177*	Restricted Access to System Security	\$0.00
HKVN4047	IP Repeater Programming and Upgrade License	\$250.00
HKVN4049**	Activate in the MOTOTRBO CPS 6.0 or later. Once activated, CPS can connect to an unlimited number of repeaters, one at a time.	\$588.35
HKVN4205*	Digital Telephone Interconnect Upgrade	\$750.00
HKVN4206*	Data Network Application Interface (IP Wireline Voice Gateway)	\$250.00
HKVN4488	Voice Network Application Interface (IP Wireline Voice Gateway) for use with AVTEC SCOUT and WAVE	\$400.00
	Extended Range Direct Mode Operation NEW R2.7.1!	
	* These System level options must be used to enable the corresponding feature in All Repeaters in the Radio system: both voice and data revert.	
	** These software options are to be enabled only in the Repeaters that will support the specific feature (e.g. Enhanced GPS in the Data Revert Repeaters and	
	connect in the voice Repeater that is connected to the phone patch box and Digital Voting Only in the Voting Repeater).	
	Telephone Interconnect in the voice Repeater that is connected to the phone patch box and Digital Voting Only in the Voting Repeater).	
	Crescent Power Amp filters: *** Available to order via MOL only *** Frequency is required at time of order	
DSP1020MOVCS	P10 SERIES Amplifier, 136-174MHz, 20-50W Input, 100W Output, 23A Current Draw	\$1,670.00
DSP1020MOUCS	Replacement for RDD5565A, RDD5563A, RDD5548A, RDD5564A. Requires R1685 or RDN9900 Power Supply	\$1,915.00
	P10 SERIES Amplifier, 406-512MHz, 20-50W Input, 100W Output, 23A Current Draw	
	Replacement for RDE6067A, RDE6068A, RDE6069A, RDE6106A, RDE6105A. Requires R1685 or RDN9900 Power Supply	
DSRM60M	RM60M Astron Power Supply, 13.8VDC, 50A Continuous, 55A ICS	\$686.00
DSRM50M	RM50M Astron Power Supply, 13.8VDC, 37A Continuous, 50A ICS	\$516.00
CDQRDN9900	DPS-30 Duracomm, Filtered Power Supply, 13.8VDC, 30A Max	\$514.00
DSP1020MOVPS	P10 SERIES, CS Amplifier, 136-174MHz, 20-50W Input, 100W Output, 13.8DC / 110 AC	\$2,228.00
	Includes an integrated 110V AC Power Supply; Frequency is required at time of order	
DSP1020MOUPS	P10 SERIES, CS Amplifier, 406-512MHz, 20-50W Input, 100W Output, 13.8DC / 110AC	\$2,458.00
	Includes an integrated 110V AC Power Supply; Frequency is required at time of order	
	Duplexers - All duplexers have female type "N" connectors.	
	Untuned Duplexers (for use with standard repeater) - Requires Tuning in the Field	
HFD8188	VHF Duplexer, 144-155 MHz (minimum & maximum freq. separation 4.5 MHz/6 MHz)	\$722.00
HFD8189	VHF Duplexer, 155-162 MHz (minimum & maximum freq. separation 4.5 MHz/6 MHz)	\$611.00
HFD8190	VHF Duplexer, 162-174 MHz (minimum & maximum freq. separation 4.5 MHz/6 MHz)	\$611.00
DSCP10725UNTUNED	UHF Duplexer - Untuned 406-500 MHz (N-female 4-8 MHz spacing) Pre-tuned 460 MHz (Low) and 465 MHz (High)	\$463.00
	Tuning instructions are included in the shipment and must be followed in order to keep the warranty in place	
HFE8400	UHF Duplexer, 406-450 MHz (minimum & maximum freq. separation 5 MHz)	\$571.00
	Requires tuning in the field	
	Untuned Duplexers (for use with 100 Watt power amplifiers) - Requires Tuning in the Field	
9175300H01	VHF Duplexer (RoHS) 132-146MHz (5MHz separation RX or TX)	\$1,380.00
9175300H02	VHF Duplexer (RoHS) 144-160MHz (5MHz separation RX or TX)	\$1,415.00
9175300H03	VHF Duplexer (RoHS) 158-174MHz (5MHz separation RX or TX)	\$1,380.00
9175300H05	UHF Duplexer (RoHS) 409-435MHz (5MHz separation RX or TX)	\$2,170.00
9175300H06	UHF Duplexer (RoHS) 435-470MHz (5MHz separation RX or TX)	\$1,415.00
	Tuned Duplexers (for use with standard repeater) - Must Specify Frequency for Tuning	
HFD8465	VHF Duplexer, 150-160 MHz (minimum & maximum freq. separation 4.5 MHz/6 MHz)	\$611.00
DSCP10725TUNED	UHF Duplexer - Tuned 406-500 MHz (N-female 4-8 MHz spacing)	\$463.00
Duplexer Cables - All	N-Type Male to N-Type Male and N-Type Male to BNC Male cables are needed to connect the XPR8300 to a Duplexer	
0112004B04	N - Type Male to N - Type Male 24" (to connect repeater to external duplexer or preselector)	\$100.00
0112004U04	N - Type Male to BNC Male 24" (to connect repeater to external duplexer or preselector)	\$72.00
3082081X01	Right angle N-Type Male to straight N-Type Male 30" (to connect 100W PA to external duplexer/preselector)	\$48.50
	Antennas- Contact Dealer Support Services for antennas	
	Mounting Accessories:	
PMLE5031	Wall Mount Bracket Kit	\$135.99
PMLE4548	Rack Mount Duplexer/Filter Enclosure Kit (includes mounting screws)	\$177.98

Preselctors:			
HFB8461	VHF Preselctor, 144-160 MHz		\$336.00
HFB8462	VHF Preselctor, 160-174 MHz		\$336.00
HFB8459	UHF Preselctor, 440-474 MHz		\$507.10

To order Preselctors TUNED, place your order through Customer Care Services at 800-422-4210.

To order Preselctors UN-TUNED, order directly through Customer Care Services. Preselctors must be mounted externally when using an XPR™ 8300 Repeater. All preselctors have female type "N" connector. A type "N" male to male connector is required for proper operation (0112004B04 or 0112004U04). The length of the cable depends on your application. Call Customer Care Services to find a cable for your individual application or for additional preselctor options.

Suggested Retail

SIR5700 Accessories

MODEL NUMBER	DESCRIPTION	MSRP
DSISB50LNC2	Lightning Protection Recommendation Accessories: RF SPD, 125-1000MHZ DC BLOCK BROADBAND BULKHEAD MT, NF ANT, NF EQUIP	\$84.00

Coaxial Cable In-Line Arrestors:

RXK4032	Tower Mounting Hardware for Lightning Arrestor	\$15.00
DSISB50LNC2MA	RF SPD, 125-1000MHZ DC BLOCK BROADBAND BULKHEAD MT, NM ANT, NF EQUIP	\$84.00

Service, Programming Accessories and Cables:

RVN5115	Portable, Mobile and Repeater Customer Programming Software (CPS) Package - DVD disk and MOL download. Software Package includes CPS, Air Tracer, Tuner, RDAC, MNIS MCDD, DDMS and the MOTOTRBO System Planner. 3 Year Subscription. Note: Software requires a license agreement and is not intended for resale.	\$299.00
HKVN4362	Portable, Mobile and Repeater Customer Programming Software (CPS) Package - MOL download only version. Software Package includes CPS, Air Tracer, Tuner, RDAC, MNIS MCDD, DDMS and the MOTOTRBO System planner. 3 year Subscription. Note: Software requires a license agreement and is not intended for resale.	\$169.00

30009477001 Repeater Programming Cable (USB A TO USB B)

PMKN4166	Test Cable (for test box and external speaker)	Call for Pricing
RLN4460	Test Box for Portables and Mobiles	Call for Pricing
HSN1006	External Speaker	Call for Pricing
GMMN4063	Service Mic	Call for Pricing
PMKN4167	Battery Back-up Cable	Call for Pricing

Network Devices:

DSIG411	HP MSR2003 AC ROUTER	\$767.00
DSHP19782A	HP Procurve 2530-24 Ethernet Switch (Available to order via MOL only)	\$356.00

General Accessories:

MN001436A01	MOTOTRBO SLR Repeater Basic Service and Installation Manual (PDF ONLY)	N/C
MN001443A01	MOTOTRBO SLR 5000 Series Quick Start Guide (PDF ONLY)	N/C
6880309T12	MOTOTRBO System Planner	\$30.00
3087791G01	120V AC Line Cord	\$20.00

Infrastructure Repair:

Infrastructure Repair service covers all Motorola-manufactured equipment, as well as equipment from select third-party infrastructure vendors when applicable. Factory trained and certified technicians troubleshoot, analyze, test, and repair your equipment at Motorola's Infrastructure Depot Operations (IDO). Upon completion, the repaired unit will be shipped via normal shipping methods. Motorola will pay for outbound shipping via Motorola's normal shipping methods. For more information, contact your Motorola representative or your Motorola Customer Support Manager. Infrastructure Repair <http://ecat.comm.mot.com/ecat/pricebooks/dup/infrep02.htm>

Infrastructure Repair with Advanced Replacement:

Infrastructure Repair with Advanced Replacement service covers all Motorola-manufactured equipment, as well as equipment from select third-party infrastructure vendors when applicable. Factory trained and certified technicians troubleshoot, analyze, test, and repair your equipment at Motorola's Infrastructure Depot Operations (IDO). When available, Motorola will provide Customer with an Advanced Replacement unit(s) or FRU(s) in exchange for Customer's malfunctioning FRU(s). Non-standard configurations, Customer-modified infrastructure and certain third party infrastructure are excluded from Advanced Replacement service. Malfunctioning FRU (s) will be evaluated and repaired by IDO and returned to IDO FRU inventory upon completion of repair. Motorola will pay the inbound shipping charges only with use of the Motorola's designated delivery service. Motorola will also pay for outbound shipping via Motorola's normal shipping methods.

Infrastructure Repair with Advanced Replacement

**SLR 8000
REPEATERS
12.5 kHz**

Suggested Retail

Each SLR 8000 Includes:

- 120V AC Power Cord
- 2 Year Warranty
- Quick Start Guide

Features:

- 1-100W transmit power
- Integrated 5A battery charger
- Supports Two Simultaneous Voice Paths in Digital TDMA Mode
- Operates in Analog or Digital Mode
- Supports all MOTOTRBO system architectures
- Remote Diagnostics Alarms and Controls (RDAC)
- 100% Continuous Duty Cycle
- Internal Power Supply
- Rack Mountable
- Automated Battery Back-up (Battery sold separately)



*Please also see the list of available Premium Software feature options

MODEL NUMBER	PWR	DESCRIPTION	MSRP
T8319	1-100W	SLR 8000 Base Radio	\$3,900.00

FCC INFORMATION: UHF: AB299FT4098, VHF: AB299FT3095

For technical training on Motorola products, please visit:

<https://learning.motorolasolutions.com/>

REQUIRED

SELECT FREQUENCY OPTION:	DESCRIPTION	MSRP
CA02965AA	ADD: VHF (136-174 MHz)	\$3,600.00
CA02962AA	ADD: UHF1 (400-470 MHz)	\$3,600.00

OPTIONAL

OPTIONAL CONFIGURATIONS:	DESCRIPTION	MSRP
--------------------------	-------------	------

The following configuration steps are optional. Select those you are interested in receiving.

Duplexer - If a duplexer is ordered, you MUST order a preselector.

CA02984AA	ADD : DUPLEXER, UHF (403-435MHz)	\$1,380.00
CA02985AA	ADD : DUPLEXER, UHF (435-470MHz)	\$1,380.00
CA02981AA	ADD : DUPLEXER, VHF (136-146 MHz)	\$1,380.00
CA02982AA	ADD : DUPLEXER, VHF (144-160 MHz)	\$1,380.00
CA02983AA	ADD : DUPLEXER, VHF (158-174 MHz)	\$1,380.00

Preselector - If a duplexer is ordered, you MUST order a preselector

CA02989AA	ADD: PRESELECTOR, UHF (350-470MHZ)	\$500.00
CA02986AA	ADD: PRESELECTOR, VHF (136-154MHZ)	\$500.00
CA02987AA	ADD: PRESELECTOR, VHF (150-174MHZ)	\$500.00

External Circulator - If an external circulator is ordered, you MUST also order wireline

CA02991AA	ADD: CIRCULATOR, UHF (403-470 MHz)	\$1,500.00
CA02992AA	ADD: CIRCULATOR, VHF (136-146 MHz)	\$1,500.00
CA02993AA	ADD: CIRCULATOR VHF (144-160MHz)	\$1,500.00
CA02994AA	ADD: CIRCULATOR VHF (158-174MHz)	\$1,500.00

Antenna Relay - If an antenna relay is ordered, you MUST also order the wireline

CA02995AA	ADD: ANTENNA RELAY	\$250.00
-----------	--------------------	----------

Wireline - If an antenna relay, circulator or Spectra TAC has been ordered, you MUST also order the wireline

CA02996AA	ADD: WIRELINE	\$400.00
-----------	---------------	----------

Power Cable - US AC power cord is included in the standard package, the below options will replace the US standard power cord

CA02968AA	ADD : POWER CABLE, EUROPE	N/C
CA02969AA	ADD : POWER CABLE, UK	N/C
CA02970AA	ADD: POWER CABLE, AUSTRALIA	N/C
CA02972AA	ADD: POWER CABLE BRAZIL	N/C

DC Power Cable

CA02971AA	ADD : POWER CABLE, DC	\$25.00
-----------	-----------------------	---------

Interface Cables

CA02977AA	ADD: AUXILIARY SYSTEM CABLE	\$50.00
CA02978AA	ADD: COMMUNITY REPEATER PANEL CABLE	\$50.00
CA02979AA	ADD: ANALOG/DIGITAL PHONE PATCH CABLE	\$50.00

Factory Test Report

CA03040AA	ADD: SLR 8000 FACTORY TEST REPORT	N/C
-----------	-----------------------------------	-----

Miscellaneous

CA03000AA	ADD: BASE STATION OPERATION	N/C
CA03041AA	ADD: SLR 8000 BSIM CD	N/C
<u>Spectra TAC - If Spectra TAC is ordered, you MUST also order the wireline</u>		
CA02999AA	ENH: SPECTRA TAC	\$150.00

US VERSION

**SLR 8000
REPEATER
ACCESSORIES**

RESELLER PRICES

MODEL NUMBER	DESCRIPTION	MSRP
--------------	-------------	------

Premium System Software:

Use the part numbers below to purchase Premium Software feature Entitlement ID's (EID) for the SLR 8000 repeaters. You will receive the EID via an e-mail. Use the MOTOTRBO RVN5115 CPS to register the serial number and activate the specific feature in the firmware of the desired unit. Internet connection is required during the registration, but the activation can be done offline.

Note: MOTOTRBO Premium Software Licenses are NOT transferrable from one device to another. Once a software feature has been registered and activated in a radio/repeater, it can NOT be transferred to another radio/repeater. The SLR 800 repeaters contain an Integrated Chassis ID module which retains the MOTOTRBO Premium Software features that were enabled on the unit. Servicing and replacing service FRU's will not require replacement licenses. Any extraordinary considerations for a replacement license on these models would require a call to Technical Support at 800-927-2744.

HKLN4439*	Capacity Plus Single Site Digital Trunking	\$1,667.00
HKVN4112*	Linked Capacity Plus Upgrade from Capacity Plus -	\$3,335.00
HKVN4110*	Linked Capacity Plus New System Deployment -	\$5,000.00
HKVN4324*	Capacity Max Repeater License	\$6,000.00
HKVN4243**	Digital Voting Operation	\$1,250.00
HKLN4442	RDAC Multiple System Monitoring Upgrade License	\$250.00
HKVN4044	Dynamic Mixed Mode Upgrade License (Analog & Digital Automatic Call Switching)	\$250.00
HKVN4055**	Enhanced Scheduled GPS License	\$750.00
HKVN4178*	Restricted Access to System Security	\$0.00
HKVN4047	IP Repeater Programming and Upgrade License	\$250.00
	Activate in the MOTOTRBO CPS 6.0 or later. Once activated, CPS can connect to an unlimited number of repeaters, one at a time.	
HKVN4066**	Digital Telephone Interconnect Upgrade	\$583.35
HKVN4366A	Digital Local Audio	\$250.00
HKVN4208*	Data Network Application Interface (IP Wireline Data Gateway)	\$750.00
HKVN4209*	Voice Network Application Interface (IP Wireline Voice Gateway) for use with AVTEC SCOUT and WAVE	\$250.00
HKVN4488	Extended Range Direct Mode Operation NEW R2.7.1!!	\$400.00

* These System level options must be used to enable the corresponding feature in All Repeaters in the Radio system: both voice and data revert.

** These software options are to be enabled only in the Repeaters that will support the specific feature (e.g. Enhanced GPS in the Data Revert Repeaters and Telephone Interconnect in the voice Repeater that is connected to the phone patch box and Digital Voting Only in the Voting Repeater).

Service, Programming Accessories and Cables:

RVN5115	Portable, Mobile and Repeater Customer Programming Software (CPS) Package - DVD disk and MOL download. Software Package includes CPS, Air Tracer, Tuner, RDAC, MNIS MCDD, DDMS and the MOTOTRBO System Planner. 3 Year Subscription. Note: Software requires a license agreement and is not intended for resale.	
HKVN4362	Portable, Mobile and Repeater Customer Programming Software (CPS) Package - MOL download only version. Software Package includes CPS, Air Tracer, Tuner, RDAC, MNIS MCDD, DDMS and the MOTOTRBO System planner. 3 year Subscription. Note: Software requires a license agreement and is not intended for resale.	
30009477001	Repeater Programming Cable (USB A TO USB B)	Call for Pricing
PMKN4166	Test Cable (for test box and external speaker)	Call for Pricing
RLN4460	Test Box for Portables and Mobiles	Call for Pricing
GMMN4063	Service Mic	Call for Pricing
3082933N08	120V AC Line Cord	Call for Pricing
PMKN4167	Battery Back-up Cable	Call for Pricing

Network Devices:

DSJG411AABA	HP MSR2003 AC ROUTER	\$767.00
DSHPJ9782A	HP Procurve 2530-24 Ethernet Switch (Available to order via MOL only)	\$356.00

Infrastructure Repair:

Infrastructure Repair service covers all Motorola-manufactured equipment, as well as equipment from select third-party infrastructure vendors when applicable. Factory trained and certified technicians troubleshoot, analyze, test, and repair your equipment at Motorola's Infrastructure Depot Operations (IDO). Upon completion, the repaired unit will be shipped via normal shipping methods. Motorola will pay for outbound shipping via Motorola's normal shipping methods. For more information, contact your Motorola representative or your Motorola Customer Support Manager.

Infrastructure Repair

<http://ecat.comm.mot.com/ecat/pricebooks/dup/infrep2.htm>

Infrastructure Repair with Advanced Replacement:

Infrastructure Repair with Advanced Replacement service covers all Motorola-manufactured equipment, as well as equipment from select third-party infrastructure vendors when applicable. Factory trained and certified technicians troubleshoot, analyze, test, and repair your equipment at Motorola's Infrastructure Depot Operations (IDO). When available, Motorola will provide Customer with an Advanced Replacement unit(s) or FRU(s) in exchange for Customer's malfunctioning FRU(s). Non-standard configurations, Customer-modified Infrastructure and certain third party Infrastructure are excluded from Advanced Replacement service. Malfunctioning FRU (s) will be evaluated and repaired by IDO and returned to IDO FRU Inventory upon completion of repair. Motorola will pay the inbound shipping charges only with use of the Motorola's designated delivery service. Motorola will also pay for

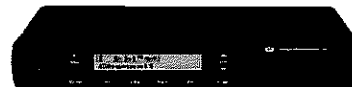
Infrastructure Repair with Advanced Replacement
<http://ecat.comm.mot.com/ecat/pricebooks/dup/infrep.htm>

XPR™ 2500
VHF & UHF MOBILES
 6.25e/12.5 kHz

Suggested Retail

Standard Package Includes:

- Compact Microphone (PMMN4090)
- Low Profile Bracket (RLN6469)
- 10 ft Power Cable (HKN4191)
- STANDARD 2 YR WARRANTY + 1 YR SFS LITE



Main Radio Features:

Max. Number of Channels	128
Display	Monochrome
Keypad (via Enhanced Microphone)	Optional
Menu Navigation Buttons	N/A
Front Programmable Buttons	4
Channel Up / Down Rocker	Yes
Control Station Operation	Yes
Handheld Control Head	N/A

Enhanced Radio Features:

GPS	N/A
Remote Mount	N/A
Expansion Card	N/A
Bluetooth Audio and Data	N/A
Third Party Applications	N/A

Systems Supported:

Analog Conventional	Yes
Digital Conventional	Yes
IP Site Connect	Optional
Capacity Plus	Optional
Linked Capacity Plus	Optional
Connect Plus	N/A
Capacity Max	N/A
LTR/PassPort	N/A

Notes:

1. For a full list of licensable features please refer to the "Premium Software Feature" section below

Frequencies Not Allowed for XPR 2500:

153.590 153.610 172.800 422.400
 153.600 172.790 172.810

**XPR™ 2500
VHF & UHF MOBILES**

RESELLER PRICES

OPTIONS

BAND SPLIT	BAND	PWR	CHAN	MODEL	MODEL DESCRIPTION	MSRP
136-174 MHz	VHF	1-25W	128	AAM02JNH9JA1AN	XPR 2500 136-174 MHz 25W Display	\$651.67
136-174 MHz	VHF	25-45W	128	AAM02JQH9JA1AN	XPR 2500 136-174 MHz 45W Display	\$718.33
403-470 MHz	UHF	1-25W	128	AAM02QNH9JA1AN	XPR 2500 403-470 MHz 25W Display	\$701.67
403-470 MHz	UHF	25-40W	128	AAM02QPH9JA1AN	XPR 2500 403-470 MHz 40W Display	\$768.33

FCC INFORMATION - VHF 25W: ABZ99FT3090, VHF 45W: ABZ99FT3091, UHF 25W: ABZ99FT4092, UHF 40W: ABZ99FT4093
Qualifies for Mix&Match (See Appendix for details)

Options: TO COMPLETE AN ORDER YOU MUST CHOOSE ONE (1) OPTION FROM EACH STEP BELOW

STEP 1:

Microphone Options:

STDMIC0776	Standard Compact Microphone (PMMN4090). Does not support Remote Monitor.	N/C
QA03850	Heavy Duty Microphone (PMMN4091). Does not support Remote Monitor.	\$31.00
QA03848	Enhanced Keypad Microphone (PMMN4089). Supports Remote Monitor.	\$51.00
B71	Omit Microphone	-\$10.00

STEP 2:

Bracket Options:

STDBKT0776	Standard Mounting Bracket (Low Profile - RLN6469)	N/C
B65	Omit Standard Mounting Bracket	-\$4.00

STEP 3:

Cable Options: (Optional HKN9327 Ignition Switch Cable is required for installations requiring ignition sense)

STDCBL0776	Standard Power Cable (HKN4191)	N/C
B161	Omit Standard Power Cable	-\$8.00

Shipping Box Options:

STDBOX0776	Standard Model Box	N/C
B842	Bulk Packing (minimum 2 radios per box)	N/C

STEP 5:

The XPR Series mobiles ship with a Standard 3-Year Service from the Start LITE (SFS) option for 3 years of parts and labor warranty coverage. Additional SFS options are also available in the General Options section.

Service from the Start Options:

STDRSA0446	STANDARD 2 YR WARRANTY + 1 YR SFS LITE	N/C
GA00164	Omit 1-Year Service from the Start LITE (Omitting this option provides 2 years of coverage)	-\$18.33

General Options:

The XPR Series mobiles ship with a standard 2-year parts and labor warranty. Additionally, they ship standard with a 1-year Service from the Start-LITE (SfS) option (formerly known as the Repair Service Advantage). If you desire additional years of SFS LITE, you may choose one of the following options. Please note that these plans are in addition to the 2-year standard warranty and 1 year SFS LITE ships standard with unit.

G24	ADD: 2-Year Service from the Start - LITE Provides for 2 years of extended hardware repair coverage beginning after the 2 year standard warranty and 1 year of SFS-LITE that ships standard with the unit for a total coverage period of 5 years. Repairs will be made only at the designated Motorola repair depot. Local services are not included. Motorola will pay inbound shipping charges only with the use of the Motorola designated delivery service. Motorola will pay for outbound-shipping via Motorola's normal shipping methods. No discounts are allowed on this option.
GA00249	ADD: Service from the Start Comprehensive Provides 3 years of hardware repair coverage and chemical, liquid, and other physical damage on your Motorola portable and mobile subscriber radios. Comprehensive coverage starts from the first day the radio is put into use. Repairs will be made only at the designated Motorola repair depot. Local charges are not included. Motorola will pay inbound shipping charges only with use of the Motorola designated deliver service. Motorola will pay for outbound shipping via Motorola's normal shipping methods. No discounts are allowed on this option. This SFS Comprehensive option is provided at a discount to override the existing 1 year SFS LITE that is already tied to the radio.

Premium Software Features:

HKVN4084	MOTOTRBO Enhanced Privacy
HKVN4154	MOTOTRBO IP Site Connect
HKVN4271	MOTOTRBO Digital Telephone Interconnect
HKVN4413	MOTOTRBO License Capacity Plus (Single Site)
HKVN4414	MOTOTRBO License Capacity Plus (Multi-Site)
HKVN4085	MOTOTRBO Transmit Interrupt

XPR™ 3500e
VHF & UHF PORTABLES
6.25e/12.5 kHz

Suggested Retail

Standard Package Includes:

- Li-Ion IMPRES Li-Ion, 2100 mAh IP68 with Belt Clip (PMNN4491)
- IMPRES™ Single-Unit Charger CEC Compliant (PMPN4174A)
- UHF or VHF Antenna (must select appropriate option)
- 2" Belt Clip (PMLN4651)
- Accessory Dust Cover (O104058J40)

STANDARD 2 YR WARRANTY + 1 YR SFS LITE

Main Radio Features:

Max. Number of Channels	128
Display	Monochrome
Keypad	Limited
Menu Navigation Buttons	N/A
Side Programmable Buttons	2
Front Programmable Buttons	2
Top Channel Knob Positions	16
Top Programmable (Orange) Button	N/A
Ingress Protection Rating	IP67

Enhanced Radio Features:

GPS	N/A
Intrinsically Safe Option	Optional
Expansion Card	N/A
Bluetooth Audio	Optional
Bluetooth Data	Optional
Third Party Applications	N/A
WiFi	Optional
Enhanced Privacy	Optional
Transmit Interrupt	Optional
Digital Telephony	Optional
Indoor Location	N/A
Text to Speech	N/A
Man Down	N/A

Systems Supported:

Analog Conventional	Yes
Digital Conventional	Yes
IP Site Connect	Optional
Capacity Plus	Optional
Linked Capacity Plus	Optional
Connect Plus	N/A
Capacity Max	N/A
LTR/PassPort	N/A

Notes:

1. For a full list of licensable features please refer to the "Premium Software Feature" section below

Frequencies not Allowed for XPR3300 (Self Quiet)					
VHF			UHF		
139.200	144.000	148.800	403.200	422.400	427.200
153.600	158.400	160.000	432.000	446.400	456.000
163.200	168.000	172.030	460.800	465.600	480.000
172.800			499.200	504.000	508.800
			519.250		



**XPR™ 3500e
VHF & UHF PORTABLES
MODELS AND OPTIONS**

RESELLER PRICES

BAND SPLIT	BAND	PWR	CHAN	MODEL	MODEL DESCRIPTION	MSRP
136-174 MHz	VHF	1W to 5W (ships 5W)	128	AAH02JDH9VA1AN	XPR 3500e 136-174 5W LKP WIFI CAPABLE	\$660.00
403-512 MHz	UHF	1W to 4W (ships 4W)	128	AAH02RDH9VA1AN	XPR 3500e 403-512 4W LKP WIFI CAPABLE	\$702.00

FCC INFORMATION VHF: AZ489FT7069, UHF: AZ489FT7068

Qualifies for Mix&Match (See Appendix for details)

Options: TO COMPLETE AN ORDER YOU MUST SELECT ONE (1) CHOICE FOR EACH STEP

STEP 1:

Battery Options:

STDBAT0867	Standard Battery - IMPRES Li-Ion, 2100 mAh IP68 with Belt Clip (PMNN4491_)	N/C
QA02309	IMPRES LV Hi-Cap Li-Ion, 3000 mAh Battery IP68 with Belt Clip (PMNN4493_)	\$33.33
QA06045	IMPRES LV Hi-Cap Li-Ion, 3000 mAh Battery IP68 with Vibr. Belt Clip (PMNN4488_)	\$66.67
QA04950	IMPRES LV Li-Ion TIA4950, 2900mAh IP68 with Belt Clip (PMNN4490_)*	\$70.67

"The belt clip comes as part of the battery only when ordered as an option to the radio"

* The XPR 3300e, XPR 3500e, XPR 7350e, XPR 7550e, XPR7380e and XPR7580e portable radios MUST be ordered and shipped from Motorola with UL option QA04950 for the radios to be properly processed, certified and labeled as UL Approved in accordance with US and Canada Codes as Intrinsically Safe for use in Division 1, Division 2, Class 1, Group A, B, C, D, Class I Groups C, D, Class II Group E, F, G and Class III hazardous locations.

HAZ LOC certified by UL to standards ANSI/TIA 4950 and CAN/CSA C22.2 NO. 157-92.
Classification Rating Division 1, Class I, Groups C, D; Class II Group E, F, G; Class III. T3C.
Tamb = -25 °C to +60 °C, and Classification Rating Division 2, Class I, Groups A, B, C, D.
Intrinsically Safe when used with Motorola Battery PMNN4490A

STEP 2:

Charger Options:

STDCHG0867	Standard Charger - IMPRES Single Unit Charger CEC Compliant (PMPN4174A) With CEC Compliant Switch Mode Power Supply for customers in CA, OR, and WA	N/C
H951	Omit Standard Charger	-\$20.00

STEP 3:

Antenna Options - You MUST choose one:

VHF Antenna Options:

QA02299	VHF Helical Antenna 136-155 MHz (PMAD4117)	N/C
QA02308	VHF Helical Antenna 144-165 MHz (PMAD4116)	N/C
QA02310	VHF Helical Antenna 152-174 MHz (PMAD4118)	N/C
QA02307	VHF Stubby Antenna 136-148 MHz (PMAD4119)	N/C
QA02305	VHF Stubby Antenna 160-174 MHz (PMAD4121)	N/C
QA02306	VHF Stubby Antenna 146-160 MHz (PMAD4120)	N/C

UHF Antenna Options:

QA02304	UHF Slim Whip Antenna, 403-512 MHz (PMAE4079)	N/C
QA02303	UHF Stubby Antenna, 403-450 MHz (PMAE4069)	N/C
QA02302	UHF Stubby Antenna, 440-490 MHz (PMAE4070)	N/C
QA02301	UHF Stubby Antenna, 470-512 MHz (PMAE4071)	N/C
H112	Omit Antenna	-\$3.50

STEP 4:

Shipping Box Options:

STDBOX0867	Standard Model Box	N/C
H415	Bulk Packaging (minimum 10 units per line item)	N/C

The XPR Series portables ship with a standard 2-year parts and labor warranty. Additionally, they ship standard with a 1-year Service from the Start -LITE (SFS) option (formerly known as the Repair Service Advantage). Additional SFS options are available in the General Options section.

STEP 5:

Service from the Start Options:

STDRSA0446	STANDARD 2 YR WARRANTY + 1 YR SFS LITE	N/C
QA00510	Omit 1-Year Service from the Start Lite (Omitting option provides 2-Years of coverage)	-\$18.33

XPR™ 3500e
VHF & UHF PORTABLES
OPTIONS

RESELLER PRICES

MODEL NUMBER	DESCRIPTION
--------------	-------------

General Options:

Accessories

QA02772	IMPRES Noise-Cancelling RSM w/3.5mm Audio Jack (PMMN4071)
QA02773	IMPRES Windporting RSM w/3.5mm Audio Jack (PMMN4073)
QA02774	2-Wire Surveillance Kit Black with Translucent Tube (PMLN7269)
QA02775	2-Wire Surveillance Kit Beige with Translucent Tube (PMLN5726)

H885 **ADD: 2-Year Service from the Start**
 Provides for 2 years of extended hardware coverage beginning after the 2 year standard warranty and 1-year SFS that ships standard with the unit for a total coverage period of 5 years. Repairs will be made only at the designated Motorola repair depot. Local services are not included. Motorola will pay inbound shipping charges only with the use of the Motorola designated delivery service. Motorola will pay for outbound shipping via Motorola's normal shipping methods. No discounts are allowed on this option.

HA00022 **3-Year Service from the Start with Comprehensive**
 Provides 3 years of hardware repair coverage and chemical, liquid, and other physical damage on your Motorola portable and mobile subscriber radios. Comprehensive coverage starts from the date of shipment. Repairs will be made only at the designated Motorola repair depot. Local services are not included. Motorola will pay the inbound shipping charges only with use of the Motorola designated delivery service. Motorola will pay for outbound shipping via Motorola's normal shipping methods. No discounts are allowed on this option.

Premium Software Features:

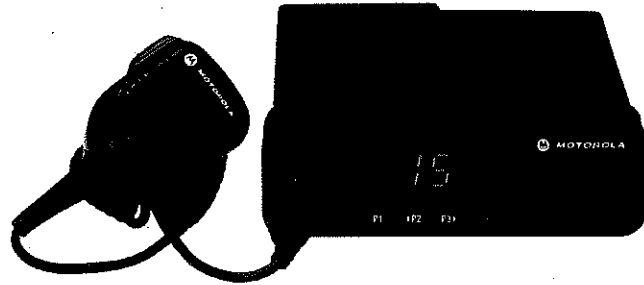
HKVN4084	MOTOTRBO Enhanced Privacy
HKVN4154	MOTOTRBO IP Site Connect
HKVN4271	MOTOTRBO Digital Telephone Interconnect
HKVN4412	BLUETOOTH 2.0 / 4.0 LE License
HKVN4249	Bluetooth Data & Discoverable Mode
HKVN4413	MOTOTRBO License Capacity Plus (Single Site)
HKVN4414	MOTOTRBO License Capacity Plus (Multi-Site)
HKVN4381	MOTOTRBO License Wi-Fi
HKVN4373	MOTOTRBO License Enhanced Noise Cancellation (SINC+)
HKVN4085	MOTOTRBO Transmit Interrupt
HKVN4493	MOTOTRBO Mute Mode
HKVN4492	MOTOTRBO Receive Audio Leveling

XPR™ 5350e & XPR™ 5380e
VHF, UHF & 800/900MHz MOBILES
 6.25e/12.5 kHz

Suggested Retail

Standard Package Includes:

- Compact Microphone (RMN5052)
 - Low Profile Bracket (RLN6469A)
 - 10 ft Power Cable (HKN4191)
 - Radio Operation Quick Reference Cards and Safety Manual with Quick Reference Guides
- STANDARD 2 YR WARRANTY + 1 YR SFS LITE**



Main Radio Features:

Max. Number of Channels	32
Display	Monoch.
Keypad (via Enhanced Microphone)	Optional
Menu Navigation Buttons	Yes
Side Programmable Buttons	N/A
Soft Front Programmable Buttons	4
Dual Purpose Volume / Channel Selector Knob	Yes
Control Station Operation 2	Yes
Handheld Control Head	N/A

Enhanced Radio Features:

GPS	Yes
Remote Mount	Optional
Expansion Card	Yes
Bluetooth Audio	Yes
Third Party Applications	Yes
WiFi	Yes
Enhanced Privacy	Yes
Transmit Interrupt	Yes
Bluetooth Data	Yes
Digital Telephony	Yes
Indoor Location	Optional
Text to Speech	Optional

Systems Supported:

Analog Conventional	Yes
Digital Conventional	Yes
IP Site Connect	Yes
Capacity Plus	Yes
Linked Capacity Plus	Yes
Connect Plus	Yes
Capacity Max	Yes
LTR/PassPort	N/A

Notes:

1. For a list of licensable features please refer to the Premium License section
2. Control Station external power supply (HPN4007), optional desktop tray, and optional desktop microphone.
3. The XPR 5000e series requires the PMKN4010 Programming Cable or PMKN4016 Programming and Test/Aligning Cable.

**XPR™ 5350e & XPR™ 5380e
VHF, UHF & 800/900MHz MOBILES**

RESELLER PRICES

OPTIONS

BAND SPLIT	BAND	PWR	CHAN	MODEL	MODEL DESCRIPTION	MSRP
XPR™ 5300e Numeric Display with Bluetooth, GPS, and Expansion Card - ENABLED Models						
136-174 MHz	VHF	1-25W	32	AAM28JNC9RA1AN	XPR 5350e GOB BT/GPS/WIFI ND ENABLED	\$819.54
136-174 MHz	VHF	25-45W	32	AAM28JQC9RA1AN	XPR 5350e GOB BT/GPS/WIFI ND ENABLED	\$895.07
403-470 MHz	UHF	1-25W	32	AAM28QNC9RA1AN	XPR 5350e GOB BT/GPS/WIFI ND ENABLED	\$876.19
403-470 MHz	UHF	25-40W	32	AAM28QPC9RA1AN	XPR 5350e GOB BT/GPS/WIFI ND ENABLED	\$951.72
450-512 MHz	UHF	1-40W	32	AAM28TRC9RA1AN	XPR 5350e GOB BT/GPS/WIFI ND ENABLED	\$951.72
806-941 MHz	800/900	10-35W (800) 10-30W (900)	32	AAM28UMC9RA1AN	XPR 5380e GOB BT/GPS/WIFI ND ENABLED	\$951.72

FCC INFORMATION: VHF 25W AZ492FT7082; VHF 45W AZ492FT7083. UHF 25W: AZ492FT7080; UHF 40W: AZ492FT7079; UHF2: AZ492FT7076; 800/900MHz: AZ492FT7083.
Quantities for Minimum Order (See Appendix for details)

Options: TO COMPLETE AN ORDER YOU MUST CHOOSE ONE (1) OPTION FROM EACH STEP BELOW

Microphone Choices:

STDMIC0511	Standard Compact Microphone for VHF & UHF (RMN5052)	N/C
STDMIC0203	Standard Compact Microphone for 800/900MHz (RMN5052)	N/C
GA00036	Heavy Duty Microphone (RMN5053)	\$30.00
QA02406	Impres 4-way Navigation Keypad Mic (RMN5127)	\$120.00
B71	Omit Microphone	-\$10.00

STEP 1:

Bracket Choices:

STDBKT0511	Standard Mounting Bracket for VHF & UHF (Low Profile - RLN6469)	N/C
STDBKT0203	Standard Mounting Bracket for 800/900MHz (Low Profile - RLN6469)	N/C
B65	Omit Standard Mounting Bracket	-\$4.00

STEP 2:

Cable Choices: (Optional RKN4136 Ignition Switch Cable is required for installations requiring ignition sense)

STDCBL0511	Standard Power Cable for VHF & UHF (HKN4191)	N/C
STDCBL0203	Standard Power Cable for 800/900MHz (HKN4191)	N/C
B161	Omit Standard Power Cable	-\$8.00

STEP 3:

Shipping Box Choices:

STDBLK0511	Standard Model Box for VHF & UHF	N/C
STDBLK0203	Standard Model Box for 800/900MHz	N/C
B842	Bulk Packing (minimum 2 radios per box)	N/C

STEP 5:

The XPR Series mobiles ship with a standard 2-year parts and labor warranty. Additionally, they ship standard with a 1-year Service from the Start -LITE (SFS) option (formerly known as the Repair Service Advantage). Additional SFS options are also available in the General Options section.

VHF & UHF Service from the Start -LITE Options:

STDRSA0871	STANDARD 2 YR WARRANTY + 1 YR SFS LITE	N/C
GA00164	Omit 1-Year Service from the Start LITE (Omitting this option provides 2 years of coverage)	-\$26.67

800/900MHz Service from the Start -LITE Options:

STDRSA0203	STANDARD 2 YR WARRANTY + 1 YR SFS LITE	N/C
GA00164	Omit 1-Year Service from the Start LITE (Omitting this option provides 2 years of coverage)	-\$26.67

XPR™ 5350e & XPR™ 5380e
VHF, UHF & 800/900MHz MOBILES
OPTIONS

RESELLER PRICES

MOTOTRBO Connect Plus Trunking Operation:

MOTOTRBO Connect Plus is the next generation professional digital trunking communications solution that provides enhanced performance, productivity and value for two way radio users. Please refer to the XRC 9000 Controller section (under Fixed Equipment) for more information on how to order Connect Plus trunking systems.

QA00588 Connect Plus Trunking Operation For Enabled Models Only
 Includes factory loading of the Connect Plus firmware application and the Connect Plus license (HKLN4457A).

Notes:

1. Option QA00588 applicable only to MOTOTRBO digital capable models.
2. Option QA00588 requires MOTOTRBO CPS version 12.0 or higher.
3. Option QA00588 requires MOTOTRBO Option Board CPS (available in MOL Resource Center at no cost).
4. Connect Plus Trunking Operation requires:
 - a. MOTOTRBO digital firmware release R02.50.05 or higher (included with factory option QA00588)
 - b. MOTOTRBO expansion card (included with factory option QA00588)
 - c. Connect Plus software (included with factory option QA00588)
 - d. Connect Plus software license (HKLN4457 license included)
5. Please refer to the Fixed Equipment section for Connect Plus Trunking system information.
6. Please refer to the Connect Plus System Planner and your Motorola COEE team representative for pre-sale support and system design considerations

G24 **ADD: 2-Year Service from the Start - LITE**
 Provides for 2 years of extended hardware coverage beginning after the 2 year standard warranty and 1 year of SFS-LITE that ships standard with the unit for a total coverage period of 5 years. Repairs will be made only at the designated Motorola repair depot. Local services are not included. Motorola will pay inbound shipping charges only with the use of the Motorola designated delivery service. Motorola will pay for outbound shipping via Motorola's normal shipping methods. No discounts are allowed on this option.

GA00249 **ADD: Service from the Start Comprehensive**
 Provides 3 years of hardware repair coverage and chemical, liquid, and other physical damage on your Motorola portable and mobile subscriber radios. Comprehensive coverage starts from the first day the radio is put into use. Repairs will be made only at the designated Motorola repair depot. Local charges are not included. Motorola will pay inbound shipping charges only with use of the Motorola designated deliver service. Motorola will pay for outbound shipping via Motorola's normal shipping methods. No discounts are allowed on this option. This SFS Comprehensive option is provided at a discount to override the existing 1-year SFS -LITE that is already tied to the radio.

Premium Software Feature:

HKVN4432	MOTOTRBO license Indoor Location
HKVN4281	MOTOTRBO Text to Speech
HKVN4493	MOTOTRBO Mute Mode
HKVN4492	MOTOTRBO Receive Audio Leveling
TT3027	Estimate Kit of 3 iBeacons AVAILABLE TO ORDER VIA MOL ONLY
HKVN4384	Authenticated Radio Disable (Required for Target Radio Only)
HKVN4385	Transmit Inhibit

XPR™ 5550e & XPR™ 5580e
VHF, UHF & 800/900MHz MOBILES
6.25e/12.5 kHz

Suggested Retail

Standard Package Includes:

- Compact Microphone (RMN5052)
 - Low Profile Bracket (RLN6469A)
 - 10 ft Power Cable (HKN4191)
 - Radio Operation Quick Reference Cards and Safety Manual with Quick Reference Guides
- STANDARD 2 YR WARRANTY + 1 YR SFS LITE



Main Radio Features:	Capable	Enabled
Max. Number of Channels	1,000	1,000
Display	3 Line Color	3 Line Color
Keypad (via Enhanced Microphone)	Optional	Optional
Menu Navigation Buttons	Yes	Yes
Side Programmable Buttons	N/A	N/A
Soft Front Programmable Buttons	4	4
Dual Purpose Volume / Channel Selector Knob	Yes	Yes
Control Station Operation	Yes	Yes
Handheld Control Head	Optional	Optional

Enhanced Radio Features:	Capable	Enabled
GPS	Yes	Yes
Remote Mount	Optional	Optional
Expansion Card	Yes	Yes
Bluetooth Audio	Yes	Yes
Third Party Applications	Yes	Yes
WiFi	Optional	Yes
Enhanced Privacy	Yes	Yes
Transmit Interrupt	Yes	Yes
Bluetooth Data	Optional	Yes
Digital Telephony	Yes	Yes
Indoor Location	Optional	Optional
Text to Speech	Optional	Optional

Systems Supported:	Capable	Enabled
Analog Conventional	Yes	Yes
Digital Conventional	Yes	Yes
IP Site Connect	Yes	Yes
Capacity Plus	Yes	Yes
Linked Capacity Plus	Yes	Yes
Connect Plus	Optional	Yes
Capacity Max	Optional	Yes
LTR/PassPort	Optional	Optional

Notes:

1. For a list of licensable features please refer to the Premium License section
2. Control Station requires external power supply (HPN4007), optional desktop tray, and optional desktop microphone.
3. LTR/Passport via 3rd Party Application from Scholer-Johnson. Requires option QA01839
4. The XPR 5000e series requires the PMKN4010 Programming Cable or PMKN4016 Programming and Test/Aligning Cable.
5. The Handheld Control Head is covered by a 1 year warranty, similar to mobile accessories

**XPR™ 5550e & XPR™ 5580e
VHF, UHF & 800/900MHz MOBILES
OPTIONS**

RESELLER PRICES

BAND SPLIT	BAND	PWR	CHAN	MODEL	MODEL DESCRIPTION	MSRP
XPR™ 5500e Color Display with Bluetooth, GPS, and Expansion Card - CAPABLE Models						
136-174 MHz	VHF	25-45W	1000	AAM28JQN9WA1AN	XPR 5550e GPS BT/WIFI - CAPABLE	\$955.00
403-470 MHz	UHF	25-40W	1000	AAM28QPN9WA1AN	XPR 5550e GOB GPS BT/WIFI - CAPABLE	\$1,005.00
450-512 MHz	UHF	1-40W	1000	AAM28TRN9WA1AN	XPR 5550e GOB GPS BT/WIFI - CAPABLE	\$1,005.00
806-941 MHz	800/900	10-35W (800) 10-20W (900)	1000	AAM28UMN9WA1AN	XPR 5580e GPS BT/WIFI - CAPABLE	\$1,005.00
XPR™ 5500e Color Display with Bluetooth, GPS, and Expansion Card - ENABLED Models						
136-174 MHz	VHF	1-25W	1000	AAM28JNN9RA1AN	XPR 5550e GOB BT/GPS/WIFI - ENABLED	\$1,008.37
136-174 MHz	VHF	25-45W	1000	AAM28JQN9RA1AN	XPR 5550e GOB BT/GPS/WIFI - ENABLED	\$1,082.02
403-470 MHz	UHF	1-25W	1000	AAM28QNN9RA1AN	XPR 5550e GOB BT/GPS/WIFI - ENABLED	\$1,065.02
403-470 MHz	UHF	25-40W	1000	AAM28QPN9RA1AN	XPR 5550e GOB BT/GPS/WIFI - ENABLED	\$1,138.67
450-512 MHz	UHF	1-40W	1000	AAM28TRN9RA1AN	XPR 5550e GOB BT/GPS/WIFI - ENABLED	\$1,138.67
806-941 MHz	800/900	10-35W (800) 10-20W (900)	1000	AAM28UMN9RA1AN	XPR 5580e GOB BT/GPS/WIFI - ENABLED	\$1,138.67

FCC INFORMATION: VHF 25W AZ492FT7082; VHF 45W AZ492FT7081, UHF 25W: AZ492FT7080; UHF 40W: AZ492FT7079; UHF2: AZ492FT7076; 800/900MHz: AZ492FT7083.
 QUANTITIES FOR MIX&MATCH (see Appendix for details)

Options: TO COMPLETE AN ORDER YOU MUST CHOOSE ONE (1) OPTION FROM EACH STEP BELOW

STEP 1:

Microphone Choices:

STDMIC0511	Standard Compact Microphone for VHF & UHF (RMN5052)	N/C
STDMIC0203	Standard Compact Microphone for 800/900MHz (RMN5052)	N/C
GA00036	Heavy Duty Microphone (RMN5053)	\$30.00
QA02406	Impres 4-way Navigation Keypad Mic (RMN5127)	\$120.00
QA04996	MOTOTRBO Handheld Control Head with 9.5ft Coiled Cable	\$534.00
B71	Omit Microphone	-\$10.00

STEP 2:

Bracket Choices:

STDBKT0511	Standard Mounting Bracket for VHF & UHF (Low Profile - RLN6469)	N/C
STDBKT0203	Standard Mounting Bracket for 800/900MHz (Low Profile - RLN6469)	N/C
B65	Omit Standard Mounting Bracket	-\$4.00

STEP 3:

Cable Choices: (Optional RKN4136 Ignition Switch Cable is required for installations requiring ignition sense)

STDCBL0511	Standard Power Cable for VHF & UHF (HKN4191)	N/C
STDCBL0203	Standard Power Cable for 800/900MHz (HKN4191)	N/C
B161	Omit Standard Power Cable	-\$8.00

STEP 4:

Shipping Box Choices:

STDBLK0511	Standard Model Box for VHF & UHF	N/C
STDBLK0203	Standard Model Box for 800/900MHz	N/C
B842	Bulk Packing (minimum 2 radios per box)	N/C

STEP 5:

The XPR Series mobiles ship with a standard 2-year parts and labor warranty. Additionally, they ship standard with a 1-year Service from the Start -LITE (SFS) option (formerly known as the Repair Service Advantage). Additional SFS options are also available in the General Options section.

VHF & UHF Service from the Start -LITE Options:

STDRSA0871	STANDARD 2 YR WARRANTY + 1 YR SFS LITE	N/C
GA00164	Omit 1-Year Service from the Start LITE (Omitting this option provides 2 years of coverage)	-\$26.67

800/900MHz Service from the Start -LITE Options:

STDRSA0203	STANDARD 2 YR WARRANTY + 1 YR SFS LITE	N/C
GA00164	Omit 1-Year Service from the Start LITE (Omitting this option provides 2 years of coverage)	-\$26.67

**XPR™ 5550e & XPR™ 5580e
VHF, UHF & 800/900MHz MOBILES
OPTIONS**

RESELLER PRICES

MOTOTRBO Connect Plus Trunking Operation:

MOTOTRBO Connect Plus is the next generation professional digital trunking communications solution that provides enhanced performance, productivity and value for two way radio users. Please refer to the XRC 9000 Controller section (under Fixed Equipment) for more information on how to order Connect Plus trunking systems.

QA00588 Connect Plus Trunking Operation For Enabled Models Only
Includes factory loading of the Connect Plus firmware application. Connect Plus license is enabled by default.

QA00588 Connect Plus Trunking Operation, Only for Capable Models
Includes factory loading of the Connect Plus firmware application.
License HCLN4457A is required to Register and Activate the Connect Plus functionality in the radio and must be purchased separately from the QA00588 option (see details below).

HCLN4457 Connect Plus Trunking License, Only needed for Capable Models
An Entitlement ID (EID) will be delivered via e mail to the address specified during order placement. Register and Activate the Connect Plus license in the MOTOTRBO Connect Plus capable radios using MOTOTRBO CPS (version 12.0 or higher). Registration requires an internet connection. Multiple licenses can be ordered under the same line item.

Notes:

1. Option QA00588 applicable only to MOTOTRBO digital capable models.
2. Option QA00588 requires MOTOTRBO CPS version 12.0 or higher.
3. Option QA00588 requires MOTOTRBO Option Board CPS (available in MOL Resource Center at no cost).
4. Connect Plus Trunking Operation requires:
 - a. MOTOTRBO digital firmware release R02.50.05 or higher (included with factory option QA00588)
 - b. MOTOTRBO expansion card (included with factory option QA00588)
 - c. Connect Plus software (included with factory option QA00588)
 - d. Connect Plus software license (order HCLN4457 separately)
5. Please refer to the Fixed Equipment section for Connect Plus Trunking system information.
6. Please refer to the Connect Plus System Planner and your Motorola COEE team representative for pre sale support and system design considerations

General Options:

QA01839 LTR/PassPort Enhanced Operation. Factory Installed.
Option includes built-in MOTOTRBO Expansion Card and installation of Scholer-Johnson software application license.
Notes:
1) Scholer-Johnson LTR/PassPort application runs on the MOTOTRBO Expansion Card. The application is compatible with both Classic and Enhanced PassPort operation.
2) Scholer-Johnson LTR/PassPort application requires winSjppTRBO programming software.
3) MOTOTRBO XPR 5500e/7500e series radios require firmware R02.06 version or higher.
4) Scholer-Johnson LTR/PassPort application is available only for display portable and mobile models.
5) Scholer-Johnson LTR/PassPort application is compatible with FM equipped portables.
6) MDC signaling is not currently available in application's conventional or LTR modes of operation for XPR 5500e/7500e series radios.
7) Quik Call II signaling is not currently available in application's conventional or LTR modes of operation.
8) Trident TrAVL operation using Scholer-Johnson application is not available for XPR 5500e series mobiles.
9) Expansion Card draws additional current from radio battery so using a higher capacity battery may be required.
10) To purchase aftermarket Scholer-Johnson LTR/PassPort application and winSjppTRBO programming software please contact Scholer-Johnson Inc. at 407 645 5093.
11) For Technical support on the LTR/PassPort application please contact Scholer-Johnson Inc. at 407 645 5093.

G24 ADD: 2-Year Service from the Start - LITE
Provides for 2 years of extended hardware coverage beginning after the 2 year standard warranty and 1 year of SFS-LITE that ships standard with the unit for a total coverage period of 5 years. Repairs will be made only at the designated Motorola repair depot. Local services are not included. Motorola will pay inbound shipping charges only with the use of the Motorola designated delivery service. Motorola will pay for outbound shipping via Motorola's normal shipping methods. No discounts are allowed on this option.

GA00249 ADD: Service from the Start Comprehensive
Provides 3 years of hardware repair coverage and chemical, liquid, and other physical damage on your Motorola portable and mobile subscriber radios. Comprehensive coverage starts from the first day the radio is put into use. Repairs will be made only at the designated Motorola repair depot. Local charges are not included. Motorola will pay inbound shipping charges only with use of the Motorola designated deliver service. Motorola will pay for outbound shipping via Motorola's normal shipping methods. No discounts are allowed on this option. This SFS Comprehensive option is provided at a discount to override the existing 1-

Premium Software Features (CAPABLE):

HKVN4323	MOTOTRBO Capacity Max FULL Subscriber License
HKVN4381	MOTOTRBO License Wi-Fi
HKVN4249	MOTOTRBO Bluetooth Data and Discoverable Mode
HKVN4432	MOTOTRBO License Indoor Location
HKVN4281	MOTOTRBO Text to Speech
HKVN4493	MOTOTRBO Mute Mode
HKVN4492	MOTOTRBO Receive Audio Leveling
TT3027	Estimate Kit of 3 Beacons AVAILABLE TO ORDER VIA MOL ONLY
HKVN4384	Authenticated Radio Disable (Required for Target Radio Only)
HKVN4385	Transmit Inhibit

Premium Software Feature (ENABLED):

HKVN4432	MOTOTRBO License Indoor Location
HKVN4281	MOTOTRBO Text to Speech
HKVN4493	MOTOTRBO Mute Mode
HKVN4492	MOTOTRBO Receive Audio Leveling
TT3027	Estimote Kit of 3 iBeacons AVAILABLE TO ORDER VIA MOL ONLY
HKVN4384	Authenticated Radio Disable (Required for Target Radio Only)
HKVN4385	Transmit Inhibit

XPR™ 7350e & XPR™ 7380e
VHF,UHF & 800/900MHz PORTABLES
6.25e/12.5 kHz

Suggested Retail

Standard Package Includes:

- For ENABLED Models, IMPRES LIION IP68 3000T (PMNN4493A, includes Belt Clip PMLN7008A)
- For CAPABLE Models, IMPRES LIION IP68 2100T (PMNN4491A, includes Belt Clip PMLN7008A)
- IMPRES™ Single-Unit Charger CEC Compliant (PMPN4174A)
- UHF, VHF , 800/900 MHz Antenna (must select appropriate option)
- Accessory Dust Cover
- STANDARD 2 YR WARRANTY + 1 YR SFS LITE



Main Radio Features:	Capable	Enabled
Max. Number of Channels	32	32
Display	N/A	N/A
Keypad	N/A	N/A
Menu Navigation Buttons	N/A	N/A
Side Programmable Buttons	3	3
Front Programmable Buttons	N/A	N/A
Top Channel Knob Positions	16	16
Top Programmable (Orange) Button	Yes	Yes
Ingress Protection Rating	IP68	IP68

Enhanced Radio Features:	Capable	Enabled
GPS	Yes	Yes
Intrinsically Safe Option	Optional	Optional
Expansion Card	Yes	Yes
Bluetooth Audio	Yes	Yes
Bluetooth Data	Optional	Yes
Third Party Applications	Yes	Yes
WiFi	Optional	Yes
Enhanced Privacy	Yes	Yes
Transmit Interrupt	Yes	Yes
Digital Telephony	Yes	Yes
Indoor Location	Optional	Optional
Text to Speech	Optional	Optional
Man Down	Optional	Optional

Systems Supported:	Capable	Enabled
Analog Conventional	Yes	Yes
Digital Conventional	Yes	Yes
IP Site Connect	Yes	Yes
Capacity Plus	Yes	Yes
Linked Capacity Plus	Yes	Yes
Connect Plus	Optional	Yes
Capacity MAX	Optional	Yes
LTR/PassPort	N/A	N/A

Notes:

1. For a list of licensable features please refer to the Premium License section
2. The XPR 7000e series requires the PMKN4012B Programming Cable or PMKN4013C Programming and Test/Aligning Cable

Frequencies Not Allowed for XPR 7500e and XPR7300e			
VHF	UHF		800/900MHz
138 MHz	417.6 MHz	499.2 MHz	864 MHz
139.2 MHz	422.4 MHz	500 MHz	936 MHz
144 MHz	427.2 MHz	504 MHz	940.8 MHz
148.8 MHz	432 MHz	504.32 MHz	
150 MHz	436.8 MHz	505.345 MHz	
151.17 MHz	456 MHz	508.8 MHz	
153.6 MHz	460.8 MHz	512 MHz	
154.62 MHz	480 MHz ± 5kHz	514.56 MHz	
156 MHz	484.8 MHz	518.4 MHz	
158.4 MHz	489.6 MHz	519.25 MHz	
160 MHz		520 MHz	
162 MHz			
163.2 MHz			
168 MHz			
172.8 MHz			
174 MHz			
154.62 MHz			

**XPR™ 7350e & XPR™ 7380e
VHF, UHF & 800/900MHz PORTABLES
OPTIONS**

RESELLER PRICES

BAND SPLIT	BAND	PWR	CHAN	MODEL	MODEL DESCRIPTION	MSRP
XPR™ 7350e & XPR 7380e Non-Display, GPS, Bluetooth, Expansion Card - CAPABLE Models						
136-174 MHz	VHF	1W to 5W (ships 5W)	32	AAH56JDC9WA1AN	XPR 7350e NKP GPS GOB BT WIFI CAPABLE	\$1,048.33
403-512 MHz	UHF	1W to 4W (ships 4W)	32	AAH56RDC9WA1AN	XPR 7350e NKP GPS GOB BT WIFI CAPABLE	\$1,090.00
806-941 MHz	800/900	1W to 2.5W (ships 2.5W)	32	AAH56UCC9WB1AN	XPR 7380e NKP GPS GOB BT WIFI CAPABLE	\$1,090.00
XPR™ 7350e & XPR 7380e Non-Display, GPS, Bluetooth, Expansion Card - ENABLED Models						
136-174 MHz	VHF	1W to 5W (ships 5W)	32	AAH56JDC9RA1AN	XPR 7350e NKP GPS BT WIFI GOB ENABLED	\$1,187.77
403-512 MHz	UHF	1W to 4W (ships 4W)	32	AAH56RDC9RA1AN	XPR 7350e NKP GPS BT WIFI GOB ENABLED	\$1,234.97
806-941 MHz	800/900	1W to 2.5W (ships 2.5W)	32	AAH56UCC9RB1AN	XPR 7380e NKP GPS BT WIFI GOB ENABLED	\$1,234.97

FCC INFORMATION VHF: AZ489FT7066, UHF: AZ489FT7065, 800/900: AZ489FT7067
Qualifies for Mx&Match (See Appendix for details)

Options: TO COMPLETE AN ORDER YOU MUST MAKE ONE (1) CHOICE PER EACH STEP

STEP 1:

Battery Choices For Capable Models

STDBAT0871	VHF/UHF - Standard Battery - IMPRES LIION IP68 2100mAh (PMNN4491A with Belt Clip)	N/C
STDBAT0126	800/900 - Standard Battery - IMPRES LIION IP68 2100mAh (PMNN4491A with Belt Clip)	N/C
QA06102	VHF/UHF IMPRES Li-Ion Battery 3000mAh IP68 (PMNN4493A with Belt Clip)	\$66.67
QA04060	800/900 - Li-Ion Battery IMPRES 3000mAh IP68 (PMNN4493A with Belt Clip)	\$66.67
QA04070	IMPRES Li-Ion Battery 3000mAh IP68 with Vibrating Alert Belt Clip (PMNN4488A)	\$75.00
QA04950	IMPRES Li-Ion Battery TIA4950 IP68 2900T (PMNN4489A with Belt Clip)*	\$79.50

Battery Choices For Enabled Models

STDBAT0871	VHF/UHF - Standard Battery - IMPRES LIION IP68 3000mAh (PMNN4493A with Belt Clip)	N/C
STDBAT0126	800/900 - Standard Battery - IMPRES LIION IP68 3000mAh (PMNN4493A with Belt Clip)	N/C
QA02300	800/900 - Li-Ion Battery IMPRES 2100mAh IP68 (PMNN4491A with Belt Clip)	N/C
QA06102	VHF/UHF Li-Ion Battery IMPRES 2100mAh IP68 (PMNN4491A with Belt Clip)	N/C
QA04070	Li-Ion Battery IMPRES 3000mAh IP68 with Vibrating Alert Belt Clip (PMNN4488A)	\$75.00
QA04950	Li-Ion Battery IMPRES LIION TIA4950 IP68 2900T (PMNN4489A with Belt Clip)*	\$79.50

* The XPR 3300e, XPR 3500e, XPR 7350e, XPR 7550e, XPR7380e and XPR7580e portable radios MUST be ordered and shipped from Motorola with UL option QA04950 for the radios to be properly processed, certified and labeled as UL Approved in accordance with US and Canada Codes as Intrinsically Safe for use in Division 1, Division 2, Class 1, Group A, B, C, D, Class I Groups C, D, Class II Group E, F, G and Class III hazardous locations.

HAZ LOC certified by UL to standards ANSI/TIA 4950 and CAN/CSA C22.2 NO. 157-92.
Classification Rating Division 1, Class I, Groups C, D; Class II Group E, F, G; Class III. T3C.
Tamb = -25 °C to +60 °C, and Classification Rating Division 2, Class I, Groups A, B, C, D.
Intrinsically Safe when used with Motorola Battery PMNN4489A

STEP 2:

VHF, UHF Charger Choices:

STDCHG0807	Standard Charger - IMPRES Single Unit Charger CEC Compliant (PMPN4174A)	N/C
H951	Omit Standard Charger	-\$20.00

800/900 Charger Choices:

STDCHG0126	Standard Charger - IMPRES Single Unit Charger CEC Compliant (PMPN4174A)	N/C
H951	Omit Standard Charger	-\$20.00

STEP 3:

Antenna Choices - You MUST choose one:

VHF Antenna Options

QA02299	VHF Helical Antenna 136-155 MHz (PMAD4117)	N/C
QA02308	VHF Helical Antenna 144-165 MHz (PMAD4116)	N/C
QA02310	VHF Helical Antenna 152-174 MHz (PMAD4118)	N/C
QA02307	VHF Stubby Antenna 136-148 MHz (PMAD4119)	N/C
QA02306	VHF Stubby Antenna 146-160 MHz (PMAD4120)	N/C

UHF Antenna Options:

QA02304	UHF Slim Whip Antenna 403-527 MHz (PMAE4079)	N/C
QA02303	UHF Stubby Antenna 403-450 MHz (PMAE4069)	N/C
QA02302	UHF Stubby Antenna 440-490 MHz (PMAE4070)	N/C
QA02301	UHF Stubby Antenna 470-512 MHz (PMAE4071)	N/C

800/900 Antenna Options:

QA01915	800MHz Whip Antenna 806-870 MHz (PMAF4011)	N/C
QA01916	900MHz Whip Antenna 896-941 MHz (PMAF4012) *	N/C
QA01419	800 MHz Stubby Antenna 806-870 MHz 12cm (PMAF4009)	N/C
QA01420	900 MHz Stubby Antenna 896-941 MHz 11cm (PMAF4010) *	N/C
* Note: This antenna is optimized for 900 MHz but can be used for mixed 800 & 900 MHz channels or sites.		
H112	Omit Standard Antenna	-\$3.50

**XPR™ 7350e & XPR™ 7380e
VHF & UHF PORTABLES
OPTIONS**

RESELLER PRICES

MODEL NUMBER	DESCRIPTION	
--------------	-------------	--

STEP 4:

VHF/UHF Shipping Box Choices:

STDBOX0807	Standard Model Box	N/C
H415	Bulk Packaging (minimum 10 units per line item)	N/C

800/900 Shipping Box Choices:

STDBOX0126	Standard Model Box	N/C
H415	Bulk Packaging (minimum 10 units per line item)	N/C

STEP 5:

The XPR Series portables ship with a standard 2-year parts and labor warranty. Additionally, they ship standard with a 1-year Service from the Start -LITE (SfS) option (formerly known as the Repair Service Advantage). Additional SfS options are also available in the General Options section.

VHF & UHF Service from the Start -LITE Options:

STDRSA0807	STANDARD 2 YR WARRANTY + 1 YR SFS LITE	N/C
QA00510	Omit 1-Year Service from the Start Lite (Omitting option provides 2-Years of coverage)	-\$26.67

800/900MHz Service from the Start -LITE Options:

STDRSA0126	STANDARD 2 YR WARRANTY + 1 YR SFS LITE	N/C
QA00510	Omit 1-Year Service from the Start Lite (Omitting option provides 2-Years of coverage)	-\$26.67

MOTOTRBO Connect Plus Trunking Operation:

MOTOTRBO Connect Plus is the next generation professional digital trunking communications solution that provides enhanced performance, productivity and value for two way radio users. Please refer to the XRC 9000 Controller section (under Fixed Equipment) for more information on how to order Connect Plus trunking systems.

QA02005	Connect Plus Trunking Operation For Enabled Models Only Includes factory loading of the Connect Plus firmware application. Connect Plus license is enabled by default.	
QA02005	Connect Plus Trunking Operation, Only for Capable Models Includes factory loading of the Connect Plus firmware application. License HCLN4457A is required to Register and Activate the Connect Plus functionality in the radio and must be purchased separately from the QA00588 option (see details below).	
HCLN4457	Connect Plus Trunking License, Only needed for Capable Models An Entitlement ID (EID) will be delivered via e mail to the address specified during order placement. Register and Activate the Connect Plus license in the MOTOTRBO Connect Plus capable radios using MOTOTRBO CPS (version 12.0 or higher). Registration requires an internet connection. Multiple licenses can be ordered under the same line item.	

Notes:

- Option QA02005 applicable only to MOTOTRBO digital capable models.
- Option QA02005 requires MOTOTRBO CPS version 12.0 or higher.
- Option QA02005 requires MOTOTRBO Option Board CPS (available in MOL Resource Center at no cost).
- Connect Plus Trunking Operation requires:
 - MOTOTRBO digital firmware release R02.06.30 or higher (Included with factory option QA02005)
 - MOTOTRBO expansion card (included in all XPR7000's by default)
 - Connect Plus software (included with factory option QA02005)
 - Connect Plus software license (order HCLN4457 separately)
- Please refer to the Fixed Equipment section for Connect Plus Trunking system information.
- Please refer to the Connect Plus System Planner and your Motorola COEE team representative for pre sale support and system design considerations

General Options:

QA00505	IMPRES Remote Speaker Microphone with 3.5mm Audio Jack (PMMN4025)	
QA00506	Submersible (IP57) Remote Speaker Microphone (PMMN4040)	
QA02817	Noise Cancelling - Intrinsicly Safe (UL) Remote Speaker Microphone with 3.5mm Audio Jack (PMMN4050)	
QA00507	Lightweight Headset (RMN5058)	
QA00508	IMPRES 2-Wire Surveillance Kit with Clear Comfortable Acoustic Tube, Black, (PMLN6129)	
QA00509	IMPRES 2-Wire Surveillance Kit with Clear Comfortable Acoustic Tube, Beige, (PMLN6130)	

**XPR™ 7350e & XPR™ 7380e
VHF & UHF PORTABLES
OPTIONS**

RESELLER PRICES

MODEL NUMBER	DESCRIPTION
H885	<p>ADD: 2-Year Service from the Start Provides for 2 years of extended hardware coverage beginning after the 2 year standard warranty and 1-year SFS that ships standard with the unit for a total coverage period of 5 years. Repairs will be made only at the designated Motorola repair depot. Local services are not included. Motorola will pay inbound shipping charges only with the use of the Motorola designated delivery service. Motorola will pay for outbound shipping via Motorola's normal shipping methods. No discounts are allowed on this option.</p>
HA00022	<p>3-Year Service from the Start with Comprehensive Provides 3 years of hardware repair coverage and chemical, liquid, and other physical damage on your Motorola portable and mobile subscriber radios. Comprehensive coverage starts from the date of shipment. Repairs will made only at the designated Motorola repair depot. Local services are not included. Motorola will pay the inbound shipping charges only with use of the Motorola designated delivery service. Motorola will pay for outbound shipping via Motorola's normal shipping methods. No discounts are allowed on this option.</p>

Premium Software Features (CAPABLE):

HKVN4323	MOTOTRBO Capacity Max FULL Subscriber License
HKVN4381	MOTOTRBO License Wi-Fi
HKVN4249	MOTOTRBO Bluetooth Data and Discoverable Mode
HKVN4432	MOTOTRBO License Indoor Location
HKVN4281	MOTOTRBO Text to Speech
HKVN4373	MOTOTRBO License Enhanced Noise Cancellation (SINC+)
HKVN4179	MOTOTRBO Built In Man Down
HKVN4280	MOTOTRBO Multi-Button PTT
HKVN4493	MOTOTRBO Mute Mode
HKVN4492	MOTOTRBO Receive Audio Leveling
HKVN4384	Authenticated Radio Disable (Required for Target Radio Only)
HKVN4385	Transmit Inhibit

Premium Software Feature (ENABLED):

HKVN4432	MOTOTRBO License Indoor Location
HKVN4281	MOTOTRBO Text to Speech
HKVN4373	MOTOTRBO License Enhanced Noise Cancellation (SINC+)
HKVN4179	MOTOTRBO Built In Man Down
HKVN4280	MOTOTRBO Multi-Button PTT
HKVN4493	MOTOTRBO Mute Mode
HKVN4492	MOTOTRBO Receive Audio Leveling
HKVN4384	Authenticated Radio Disable (Required for Target Radio Only)
HKVN4385	Transmit Inhibit

XPR™ 7550e & XPR™ 7580e
VHF,UHF & 800/900MHz PORTABLES
6.25e/12.5 kHz

Suggested Retail

Standard Package Includes:

- For ENABLED Models, IMPRES LION IP68 3000T (PMNN4493A, includes Belt Clip PMLN7008A)
- For CAPABLE Models, IMPRES LION IP68 2100T (PMNN4491A, includes Belt Clip PMLN7008A)
- IMPRES™ Single-Unit Charger CEC Compliant (PMPN4174A)
- UHF, VHF, 800/900 MHz Antenna (must select appropriate option)
- Accessory Dust Cover

STANDARD 2 YR WARRANTY + 1 YR SFS LITE



Main Radio Features:	Capable	Enabled
Max. Number of Channels	1,000	1,000
Display	Color	Color
Keypad	Full	Full
Menu Navigation Buttons	Yes	Yes
Side Programmable Buttons	3	3
Front Programmable Buttons	2	2
Top Channel Knob Positions	Continuous	Continuous
Top Programmable (Orange) Button	Yes	Yes
Ingress Protection Rating	IP68	IP68

Enhanced Radio Features:	Capable	Enabled
GPS	Yes	Yes
Intrinsically Safe Option	Optional	Optional
Expansion Card	Yes	Yes
Bluetooth Audio	Yes	Yes
Bluetooth Data	Optional	Yes
Third Party Applications	Yes	Yes
WiFi	Optional	Yes
Enhanced Privacy	Yes	Yes
Transmit Interrupt	Yes	Yes
Digital Telephony	Yes	Yes
Indoor Location	Optional	Optional
Text to Speech	Optional	Optional
Man Down	Optional	Optional

Systems Supported:	Capable	Enabled
Analog Conventional	Yes	Yes
Digital Conventional	Yes	Yes
IP Site Connect	Yes	Yes
Capacity Plus	Yes	Yes
Linked Capacity Plus	Yes	Yes
Connect Plus	Optional	Yes
Capacity MAX	Optional	Yes
LTR/PassPort	Optional	Optional

Notes:

1. For a list of licensable features please refer to the Premium License section
2. The XPR 7000e series requires the PMKN4012B Programming Cable or PMKN4013C Programming and Test/Aligning Cable

Frequencies Not Allowed for XPR 7500e and XPR7300e			
VHF	UHF		800/900MHz
138 MHz	417.6 MHz	499.2 MHz	864 MHz
139.2 MHz	422.4 MHz	500 MHz	936 MHz
144 MHz	427.2 MHz	504 MHz	940.8 MHz
148.8 MHz	432 MHz	504.32 MHz	
150 MHz	436.8 MHz	505.345 MHz	
151.17 MHz	456 MHz	508.8 MHz	
153.6 MHz	460.8 MHz	512 MHz	
154.62 MHz	480 MHz ± 5kHz	514.56 MHz	
156 MHz	484.8 MHz	518.4 MHz	
158.4 MHz	489.6 MHz	519.25 MHz	
160 MHz		520 MHz	
162 MHz			
163.2 MHz			
168 MHz			
172.8 MHz			
174 MHz			
154.62 MHz			

**XPR™ 7550e & XPR™ 7580e
VHF, UHF & 800/900MHz PORTABLES
OPTIONS**

RESELLER PRICES

BAND SPLIT	BAND	PWR	CHAN	MODEL	MODEL DESCRIPTION	MSRP
XPR™ 7550e & XPR 7580e Display with Color Display, GPS, Bluetooth, Expansion Card - CAPABLE Models						
136-174 MHz	VHF	1W to 5W (ships 5W)	1000	AAH56JDN9WA1AN	XPR 7550e FKP GPS GOB BT WIFI CAPABLE	\$1,131.67
403-512 MHz	UHF	1W to 4W (ships 4W)	1000	AAH56RDN9WA1AN	XPR 7550e FKP GPS GOB BT WIFI CAPABLE	\$1,173.33
806-941 MHz	800/900	1W to 2.5W (ships 2.5W)	1000	AAH56UCN9WB1AN	XPR 7580e FKP GPS GOB BT WIFI CAPABLE	\$1,173.33
XPR™ 7550e & XPR 7580e Display with Color Display, GPS, Bluetooth, Expansion Card - ENABLED Models						
136-174 MHz	VHF	1W to 5W (ships 5W)	1000	AAH56JDN9RA1AN	XPR 7550e FKP GPS BT WIFI GOB ENABLED	\$1,282.17
403-512 MHz	UHF	1W to 4W (ships 4W)	1000	AAH56RDN9RA1AN	XPR 7550e FKP GPS BT WIFI GOB ENABLED	\$1,329.39
806-941 MHz	800/900	1W to 2.5W (ships 2.5W)	1000	AAH56UCN9RB1AN	XPR 7580e FKP GPS BT WIFI GOB ENABLED	\$1,329.39

FCC INFORMATION VHF: AZ489FT7066, UHF: AZ489FT7065, 800/900: AZ489FT7067
Qualifies for Mix&Match (See Appendix for details)

Options: TO COMPLETE AN ORDER YOU MUST MAKE ONE (1) CHOICE PER EACH STEP

STEP 1:

Battery Choices For Capable Models

STDBAT0871	VHF/UHF - Standard Battery - IMPRES LIION IP68 2100mAh (PMNN4491A with Belt Clip)	N/C
STDBAT0126	800/900 - Standard Battery - IMPRES LIION IP68 2100mAh (PMNN4491A with Belt Clip)	N/C
QA06102	VHF/UHF IMPRES Li-Ion Battery 3000mAh IP68 (PMNN4493A with Belt Clip)	\$66.67
QA04060	800/900 - Li-Ion Battery IMPRES 3000mAh IP68 (PMNN4493A with Belt Clip)	\$66.67
QA04070	IMPRES Li-Ion Battery 3000mAh IP68 with Vibrating Alert Belt Clip (PMNN4488A)	\$75.00
QA04950	IMPRES Li-Ion Battery TIA4950 IP68 2900T (PMNN4489A with Belt Clip)*	\$79.50

Battery Choices For Enabled Models

STDBAT0871	VHF/UHF - Standard Battery - IMPRES LIION IP68 3000mAh (PMNN4493A with Belt Clip)	N/C
STDBAT0126	800/900 - Standard Battery - IMPRES LIION IP68 3000mAh (PMNN4493A with Belt Clip)	N/C
QA02300	800/900 - Li-Ion Battery IMPRES 2100mAh IP68 (PMNN4491A with Belt Clip)	N/C
QA04060	VHF/UHF - Li-Ion Battery IMPRES 2100mAh IP68 (PMNN4491A with Belt Clip)	N/C
QA04070	Li-Ion Battery IMPRES 3000mAh IP68 with Vibrating Alert Belt Clip (PMNN4488A)	\$75.00
QA04950	Li-Ion Battery IMPRES LIION TIA4950 IP68 2900T (PMNN4489A with Belt Clip)*	\$79.50

* The XPR 3300e, XPR 3500e, XPR 7350e, XPR 7550e, XPR7380e and XPR7580e portable radios MUST be ordered and shipped from Motorola with UL option QA04950 for the radios to be properly processed, certified and labeled as UL Approved in accordance with US and Canada Codes as Intrinsically Safe for use in Division 1, Division 2, Class 1, Group A, B, C, D, Class I Groups C, D, Class II Group E, F, G and Class III hazardous HAZ LOC certified by UL to standards ANSI/TIA 4950 and CAN/CSA C22.2 NO. 157-92. Classification Rating Division 1, Class I, Groups C, D; Class II Group E, F, G; Class III. T3C. Tamb = -25 °C to +60 °C, and Classification Rating Division 2, Class I, Groups A, B, C, D. Intrinsically Safe when used with Motorola Battery PMNN4489A

STEP 2:

VHF, UHF Charger Choices:

STDCHG0871 Standard Charger - IMPRES Single Unit Charger CEC Compliant (PMPN4174A) N/C
 H951 Omit Standard Charger -\$20.00

800/900 Charger Choices:

STDCHG0126 Standard Charger - IMPRES Single Unit Charger CEC Compliant (PMPN4174A) N/C
 H951 Omit Standard Charger -\$20.00

STEP 3:

Antenna Choices - You MUST choose one:

VHF Antenna Options:

QA02299 VHF Helical Antenna 136-155 MHz (PMAD4117) N/C
 QA02308 VHF Helical Antenna 144-165 MHz (PMAD4116) N/C
 QA02310 VHF Helical Antenna 152-174 MHz (PMAD4118) N/C
 QA02307 VHF Stubby Antenna 136-148 MHz (PMAD4119) N/C
 QA02305 VHF Stubby Antenna 160-174 MHz (PMAD4121) N/C
 QA02306 VHF Stubby Antenna 146-160 MHz (PMAD4120) N/C

UHF Antenna Options:

QA02304 UHF Slim Whip Antenna 403-527 MHz (PMAE4079) N/C
 QA02303 UHF Stubby Antenna 403-450 MHz (PMAE4069) N/C
 QA02302 UHF Stubby Antenna 440-490 MHz (PMAE4070) N/C
 QA02301 UHF Stubby Antenna 470-512 MHz (PMAE4071) N/C

800/900 Antenna Options:

QA01915 800MHz Whip Antenna 806-870 MHz (PMAF4011) N/C
 QA01916 900MHz Whip Antenna 896-941 MHz (PMAF4012) * N/C
 QA01419 800 MHz Stubby Antenna 806-870 MHz 12cm (PMAF4009) N/C
 QA01420 900 MHz Stubby Antenna 896-941 MHz 11cm (PMAF4010) * N/C

* Note: This antenna is optimized for 900 MHz but can be used for mixed 800 & 900 MHz channels or sites.

H112 Omit Standard Antenna -\$3.50

**XPR™ 7550e & XPR™ 7580e
 VHF & UHF PORTABLES
 OPTIONS**

RESELLER PRICES

MODEL NUMBER	DESCRIPTION
--------------	-------------

STEP 4:

VHF, UHF Shipping Box Choices:

STDBOX0871 Standard Model Box N/C
 H415 Bulk Packaging (minimum 10 units per line item) N/C

800/900 Shipping Box Choices:

STDBOX0126 Standard Model Box N/C
 H415 Bulk Packaging (minimum 10 units per line item) N/C

STEP 5:

The XPR Series portables ship with a standard 2-year parts and labor warranty. Additionally, they ship standard with a 1-year Service from the Start -LITE (SFS) option (formerly known as the Repair Service Advantage). Additional SFS options are also available in the General Options section.

VHF & UHF Service from the Start -LITE Options:

STDRSA0871 STANDARD 2 YR WARRANTY + 1 YR SFS LITE N/C
 QA00510 Omit 1-Year Service from the Start Lite (Omitting option provides 2-Years of coverage) -\$26.67

800/900MHz Service from the Start -LITE Options:

STDRSA0126 STANDARD 2 YR WARRANTY + 1 YR SFS LITE N/C
 QA00510 Omit 1-Year Service from the Start Lite (Omitting option provides 2-Years of coverage) -\$26.67

MOTOTRBO Connect Plus Trunking Operation:

MOTOTRBO Connect Plus is the next generation professional digital trunking communications solution that provides enhanced performance, productivity and value for two way radio users. Please refer to the XRC 9000 Controller section (under Fixed Equipment) for more information on how to order Connect Plus trunking systems.

QA02005 Connect Plus Trunking Operation For Enabled Models Only
includes factory loading of the Connect Plus firmware application. Connect Plus license is enabled by default.

QA02005 Connect Plus Trunking Operation, Only for Capable Models
Includes factory loading of the Connect Plus firmware application.
License HKLN4457A is required to Register and Activate the Connect Plus functionality in the radio and must be purchased separately from the QA02005 option (see details below).

HKLN4457 Connect Plus Trunking License, Only needed for Capable Models
An Entitlement ID (EID) will be delivered via e mail to the address specified during order placement. Register and Activate the Connect Plus license in the MOTOTRBO Connect Plus capable radios using MOTOTRBO CPS (version 12.0 or higher). Registration requires an internet connection. Multiple licenses can be ordered under the same line item.

Notes:

1. Option QA02005 applicable only to MOTOTRBO digital capable models.
2. Option QA02005 requires MOTOTRBO CPS version 12.0 or higher.
3. Option QA02005 requires MOTOTRBO Option Board CPS (available in MOL Resource Center at no cost).
4. Connect Plus Trunking Operation requires:
 - a. MOTOTRBO digital firmware release R02.06.30 or higher (included with factory option QA02005)
 - b. MOTOTRBO expansion card (included in all XPR7000's by default)
 - c. Connect Plus software (included with factory option QA02005)
 - d. Connect Plus software license (order HKLN4457 separately)
5. Please refer to the Fixed Equipment section for Connect Plus Trunking system information.
6. Please refer to the Connect Plus System Planner and your Motorola COEE team representative for pre sale support and system design considerations

General Options:

QA00505	IMPRES Remote Speaker Microphone with 3.5mm Audio Jack (PMMN4025)
QA00506	Submersible (IP57) Remote Speaker Microphone (PMMN4040)
QA02817	Noise Cancelling - Intrinsically Safe (UL) Remote Speaker Microphone with 3.5mm Audio Jack (PMMN4050)
QA00507	Lightweight Headset (RMN5058)
QA00508	IMPRES 2-Wire Surveillance Kit with Clear Comfortable Acoustic Tube, Black, (PMLN6129)
QA00509	IMPRES 2-Wire Surveillance Kit with Clear Comfortable Acoustic Tube, Beige, (PMLN6130)

**XPR™ 7550e & XPR™ 7580e
VHF & UHF PORTABLES
OPTIONS**

RESELLER PRICES

MODEL NUMBER	DESCRIPTION
H885	ADD: 2-Year Service from the Start Provides for 2 years of extended hardware coverage beginning after the 2 year standard warranty and 1-year SFS that ships standard with the unit for a total coverage period of 5 years. Repairs will be made only at the designated Motorola repair depot. Local services are not included. Motorola will pay inbound shipping charges only with the use of the Motorola designated delivery service. Motorola will pay for outbound shipping via Motorola's normal shipping methods. No discounts are allowed on this option.
HA00022	3-Year Service from the Start with Comprehensive Provides 3 years of hardware repair coverage and chemical, liquid, and other physical damage on your Motorola portable and mobile subscriber radios. Comprehensive coverage starts from the date of shipment. Repairs will made only at the designated Motorola repair depot. Local services are not included. Motorola will pay the inbound shipping charges only with use of the Motorola designated delivery service. Motorola will pay for outbound shipping via Motorola's normal shipping methods. No discounts are allowed on this option.
QA01839	LTR/PassPort Enhanced Operation. Factory Installed. Includes built-in MOTOTRBO Expansion Card and installation of Schoier-Johnson software license. Notes: 1) Schoier-Johnson LTR/PassPort application runs on the MOTOTRBO Expansion Card. The application is compatible with both Classic and Enhanced PassPort operation. 2) Schoier-Johnson LTR/PassPort application requires winSjppTRBO programming software. 3) MOTOTRBO XPR 5500e/7500e series radios require firmware R02.06 version or higher. 4) Schoier-Johnson LTR/PassPort application is available only for display portable and mobile models. 5) Schoier-Johnson LTR/PassPort application is compatible with UL equipped portables. 6) MDC signaling is not currently available in application's conventional or LTR modes of operation for XPR 5000e/7000e series radios. 7) Quik Call II signaling is not currently available in application's conventional or LTR modes of operation. 8) Efficient Travel operation using Schoier-Johnson application is not available for XPR 5500e series mobiles. 9) Expansion Card draws additional current from radio battery so using a higher capacity battery may be required. 10) To purchase aftermarket Schoier-Johnson LTR/PassPort application and winSjppTRBO programming software please contact Schoier-Johnson Inc. at 407 645 5093. 11) For Technical support on the LTR/PassPort application please contact Schoier-Johnson Inc. at 407 645 5093.

Premium Software Features (CAPABLE):

HKVN4323	MOTOTRBO Capacity Max FULL Subscriber License
HKVN4381	MOTOTRBO License Wi-Fi
HKVN4249	MOTOTRBO Bluetooth Data and Discoverable Mode
HKVN4432	MOTOTRBO License Indoor Location
HKVN4281	MOTOTRBO Text to Speech
HKVN4373	MOTOTRBO License Enhanced Noise Cancellation (SINC+)
HKVN4179	MOTOTRBO Built In Man Down
HKVN4280	MOTOTRBO Multi-Button PTT
HKVN4493	MOTOTRBO Mute Mode
HKVN4492	MOTOTRBO Receive Audio Leveling
HKVN4384	Authenticated Radio Disable (Required for Target Radio Only)
HKVN4385	Transmit Inhibit

Premium Software Feature (ENABLED):

HKVN4432	MOTOTRBO License Indoor Location
HKVN4281	MOTOTRBO Text to Speech
HKVN4373	MOTOTRBO License Enhanced Noise Cancellation (SINC+)
HKVN4179	MOTOTRBO Built In Man Down
HKVN4280	MOTOTRBO Multi-Button PTT
HKVN4493	MOTOTRBO Mute Mode
HKVN4492	MOTOTRBO Receive Audio Leveling
HKVN4384	Authenticated Radio Disable (Required for Target Radio Only)
HKVN4385	Transmit Inhibit

RFID-Enabled Knobs For MOTOTRBO™ and Analog Radios

Suggested Retail



GENERAL INFORMATION:

Motorola Solutions RFID enabled knobs for MOTOTRBO XPR7000e, XPR 3000e, CP200d and many legacy radios makes this process more efficient. RFID tags embedded in radio volume knobs enable quick, easy and reliable tracking of radios without the need for manual logging, scanning bar codes or opening the packaging. With RFID, a single radio or an entire crate can be scanned in seconds. Enterprise Value Added Partners like CDO Technologies and RFTrail offer complete RFID tracking solutions to make your radio inventory management more efficient.

RFID-ENABLED KNOBS:

Model	Description	List
36012030001	RFID Vol Knob, CP200d/CP/EX/HT/MTX/PR400 (Qty. 20)	\$ 215.00
36012032001	RFID Vol Knob, XPR 7000e series (Qty. 20)	\$ 215.00
36012034001	RFID Vol Knob, XPR 3000e series (Qty. 20)	\$ 215.00

Notes:

The RFID knobs are available only as Aftermarket Parts.

The RFID knobs are sold in quantities of 20.

One (1) Year Warranty.

RFID FLEET MANAGEMENT SOLUTIONS:

Any software solution will need to be provided by the customer